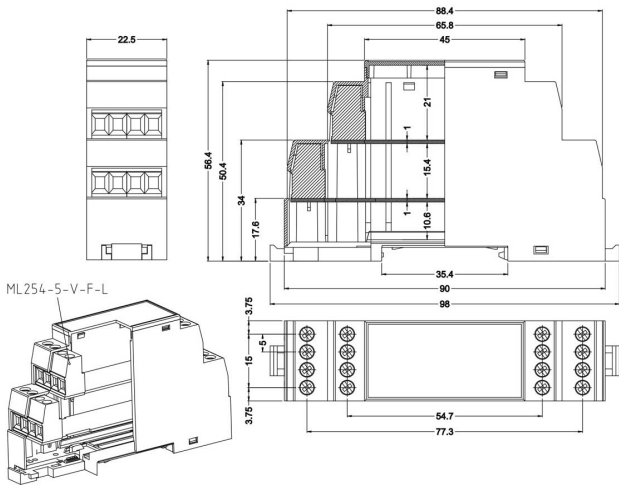
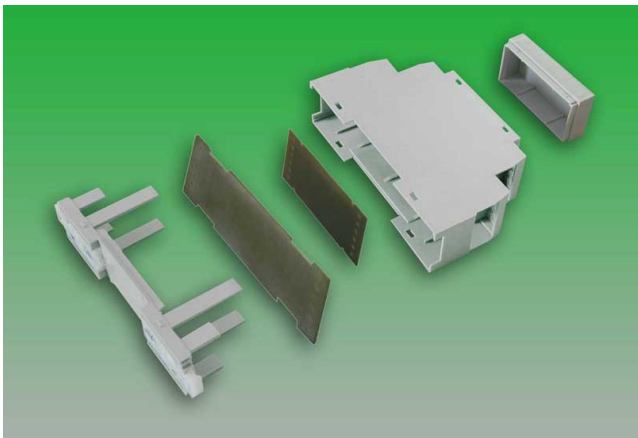


CEM22-H



GENERAL INFORMATION

|                       |      |
|-----------------------|------|
| pitch                 | -    |
| Height                | -    |
| Depth                 | -    |
| Dimensional class     | Alta |
| Wire section          | -    |
| Clamp opening size    | -    |
| Wire stripping        | -    |
| Operating temperature | -    |

ELECTRICAL CHARACTERISTICS

|         |   |
|---------|---|
| Current | - |
| Voltage | - |

MECHANICAL CHARACTERISTICS

|                    |   |
|--------------------|---|
| Screw              | - |
| Recommended torque | - |

APPROVALS DATA



|              |   |   |   |
|--------------|---|---|---|
| Current      | - | - | - |
| Voltage      | - | - | - |
| Wire section | - | - | - |
| Torque       | - | - | - |
| FILE         | - | - | - |



MATERIALS

|          |               |
|----------|---------------|
| Housing  | PA - UL 94 V0 |
| Screw    | -             |
| Clamp    | -             |
| Terminal | -             |

COLOURS

Standard

On request

|  |  |                |
|---|--|----------------|
| POLES   | NAME   | 3D FILE        |
| 01  | CEM22-H  | File available |