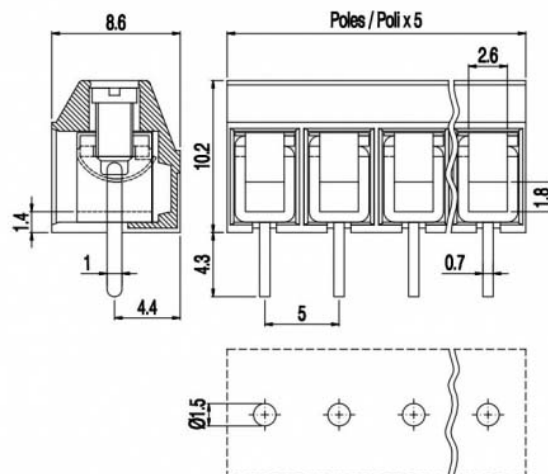


MBE15_-5-V-L



Version with antirotation pegs is available on 2 poles connections.
Disponibile per connessioni a 2 poli versioni con perni antitorzione.

GENERAL INFORMATION

pitch	5 mm
Height	10.2 mm
Depth	8.6 mm
Dimensional class	Bassa
Wire section	2.5 mm ² / 14 AWG
Clamp opening size	2.6 x 2 mm
Wire stripping	max 8 mm
Operating temperature	-40 ÷ +130 °C

ELECTRICAL CHARACTERISTICS

Current	24 A
Voltage	450 V
impulse voltage	2.5 kV

MECHANICAL CHARACTERISTICS

Screw	M2.5
Recommended torque	0.4÷0.44 Nm / 3.6÷4 in.lbs

APPROVALS DATA



EN 60998-1

Current	17.5 A
Voltage	450 V
Wire section	1.5 mm ²
Torque	0.4 Nm
FILE	EP151



EN 60998-1

24 A
450 V
2.5 mm ²
0.4 Nm
40019705










UL 1059

20 A factory / 15 A field
300 V
14 AWG
3.6 Lb-in
E178356

MATERIALS

Housing	PA - UL 94 V0
Screw	Galvanized steel
Clamp	Tin-plated copper alloy
Terminal	Tin-plated copper alloy

SCIP Number		f96aa5fb-ce76-4818-a732-b41ce6983956					
COLOURS							
Standard		On request					
							
POLES	NAME	3D FILE					
2	MBE152-5-V-L	File available					
3	MBE153-5-V-L	File not available for this product					
4	MBE154-5-V-L	File not available for this product					
5	MBE155-5-V-L	File not available for this product					
6	MBE156-5-V-L	File not available for this product					
7	MBE157-5-V-L	File not available for this product					
8	MBE158-5-V-L	File not available for this product					
9	MBE159-5-V-L	File not available for this product					
10	MBE1510-5-V-L	File not available for this product					
11	MBE1511-5-V-L	File not available for this product					
12	MBE1512-5-V-L	File not available for this product					