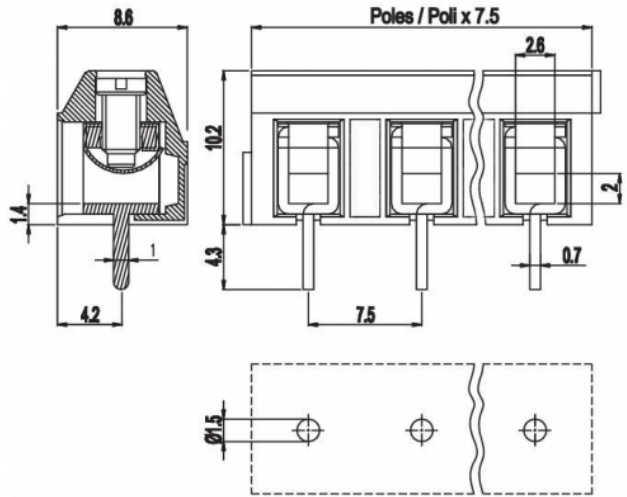
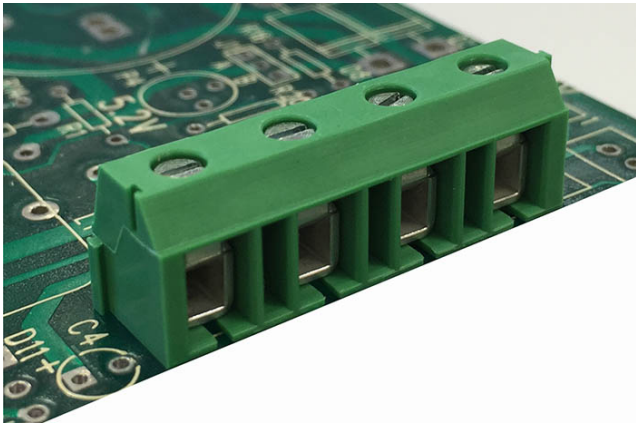


MBE17_-7,5-V



GENERAL INFORMATION

pitch	7,5 mm
Height	10.20 mm
Depth	8.60 mm
Dimensional class	Media
Wire section	2,5 mm ² / 14 AWG
Clamp opening size	2,6 x 2 mm
Wire stripping	max 7 mm
Operating temperature	-40 ÷ +130 °C

ELECTRICAL CHARACTERISTICS

Current	24 A
Voltage	750 V
Test Voltage	3 kVrms/60s

MECHANICAL CHARACTERISTICS

Screw	M2,5
Recommended torque	0,4÷0 Nm / 3,6÷3.3 in.lbs

APPROVALS DATA



Current	-	-	UL 1059
Voltage	-	-	20 A factory / 15 A field
Wire section	-	-	300 V
Torque	-	-	14 ÷ 30 AWG
FILE	-	-	3,6 Lb-in
			E178356

MATERIALS

Housing	PA - UL 94 V0
Screw	Galvanized steel
Clamp	Tin-plated copper alloy
Terminal	Tin-plated copper alloy
SCIP Number	

Deprecated: htmlspecialchars(): Passing null to parameter #1 (\$string) of type string is deprecated in

COLOURS

Standard



On request



POLES

- 2
- 3
- 4
- 5
- 6
- 7
- 8

NAME

- MBE172-7,5-V
- MBE173-7,5-V
- MBE174-7,5-V
- MBE175-7,5-V
- MBE176-7,5-V
- MBE177-7,5-V
- MBE178-7,5-V

3D FILE

- File available
- File not available for this product
- File not available for this product
- File not available for this product
- File not available for this product
- File not available for this product
- File not available for this product