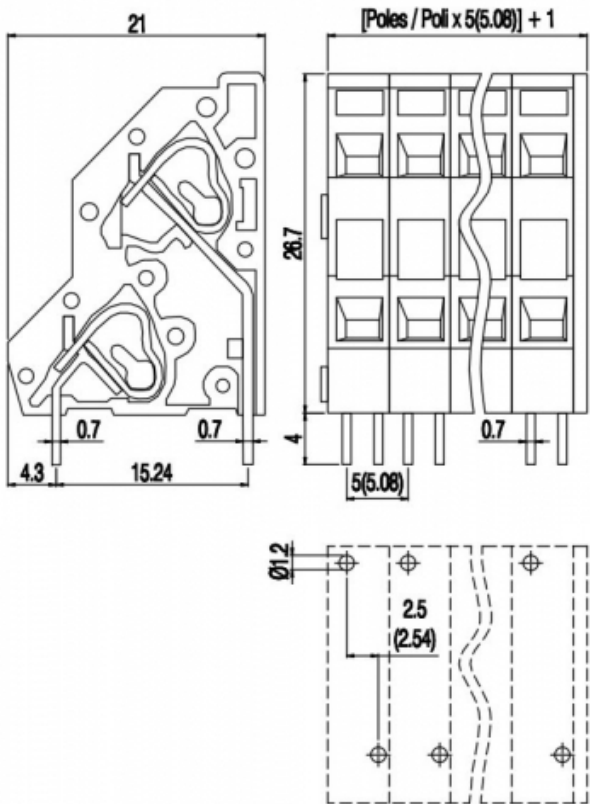


MG1D\_\_-5



GENERAL INFORMATION

pitch	5 mm
Height	26.7 mm
Depth	21 mm
Dimensional class	Bassa
Wire section	2.5 mm² / 24 AWG
Clamp opening size	-
Wire stripping	max 9 mm
Operating temperature	-40 ÷ +105 °C

ELECTRICAL CHARACTERISTICS

Current	24 A
Voltage	250 V
Test Voltage	2 kVrms/60s

MECHANICAL CHARACTERISTICS

Screw	-
Recommended torque	-

APPROVALS DATA



Current	-	-	UL 1059
Voltage	-	-	17 A factory / 17 A field 300 V

Wire section	-	-	12 ÷ 30 AWG
Torque	-	-	-
FILE	-	-	E178356
<b>MATERIALS</b>			
Housing			PA - UL 94 V0
Screw			-
Spring			Spring steel
Terminal			Tin-plated copper alloy

**COLOURS**

Standard



On request

<b>POLES</b>	<b>NAME</b>	<b>3D FILE</b>
01	MG1D01-5	File not available for this product
02	MG1D02-5	File not available for this product
03	MG1D03-5	File not available for this product
04	MG1D04-5	File not available for this product
05	MG1D05-5	File not available for this product
06	MG1D06-5	File not available for this product
07	MG1D07-5	File not available for this product
08	MG1D08-5	File not available for this product
09	MG1D09-5	File not available for this product
10	MG1D10-5	File not available for this product
11	MG1D11-5	File not available for this product
12	MG1D12-5	File not available for this product
13	MG1D13-5	File not available for this product
14	MG1D14-5	File not available for this product
15	MG1D15-5	File not available for this product
16	MG1D16-5	File not available for this product
17	MG1D17-5	File not available for this product
18	MG1D18-5	File not available for this product
19	MG1D19-5	File not available for this product
20	MG1D20-5	File not available for this product
21	MG1D21-5	File not available for this product
22	MG1D22-5	File not available for this product
23	MG1D23-5	File not available for this product