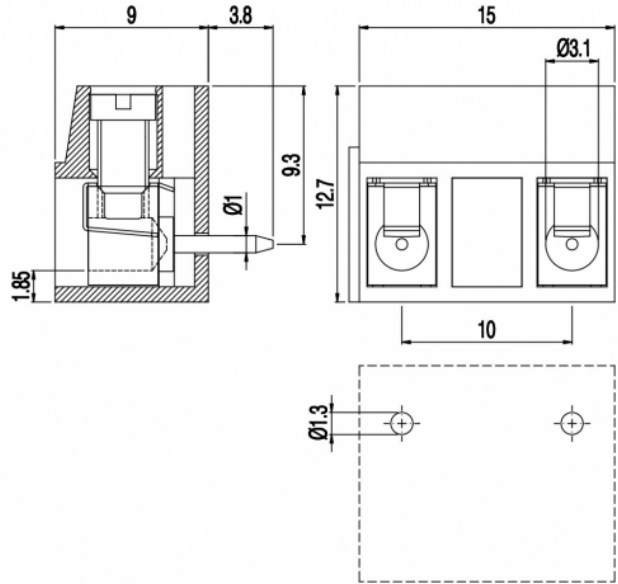


# MHE16\_-10-H



**GENERAL INFORMATION**

pitch	10 mm
Height	12.7 mm
Depth	9 mm
Dimensional class	Media
Wire section	2.5 mm <sup>2</sup> / 14 AWG
Clamp opening size	3.1 x 3.1 mm
Wire stripping	max 6 mm
Operating temperature	-40 ÷ +130 °C

**ELECTRICAL CHARACTERISTICS**

Current	16 A
Voltage	750 V
Test Voltage	3 kVrms/60s

**MECHANICAL CHARACTERISTICS**

Screw	M3
Recommended torque	0.5÷0.55 Nm / 4.5÷4.9 in.lbs

**APPROVALS DATA**



Current	-	-	<b>UL 1059</b>
Voltage	-	-	20 A factory / 15 A field
Wire section	-	-	300 V
Torque	-	-	14 ÷ 30 AWG
FILE	-	-	4.5 Lb-in
			E178356

**MATERIALS**

Housing	PA - UL 94 V0
Screw	Galvanized steel
Clamp	Tin-plated copper alloy
Terminal	Copper alloy

**COLOURS**

Standard

On request



**POLES**

	<b>NAME</b>	<b>3D FILE</b>
1	MHE161-10-H	File not available for this product
2	MHE162-10-H	File not available for this product