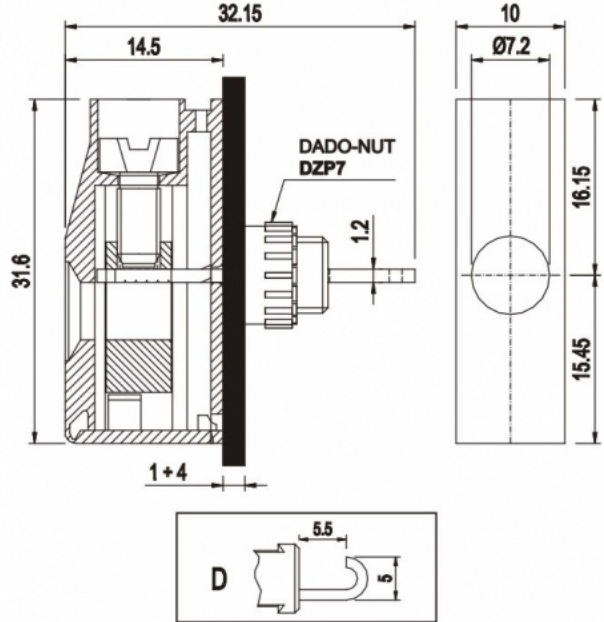


# MPT1010-D



**GENERAL INFORMATION**

pitch	10 mm
Height	31.6 mm
Depth	14.5 mm
Dimensional class	n/a
Wire section	10 mm <sup>2</sup> / 8 AWG
Clamp opening size	5.3 x 5.3 mm
Wire stripping	max 13.5 mm
Operating temperature	-40 ÷ +130 °C

**ELECTRICAL CHARACTERISTICS**

Current	57 A
Voltage	450 V
Test Voltage	-

**MECHANICAL CHARACTERISTICS**

Screw	M4
Recommended torque	1.2÷1.32 Nm / 10.8÷11.9 in.lbs

**APPROVALS DATA**



	<b>EN 60998-1</b>	<b>EN 60998-1</b>	<b>UL 1059</b>
Current	57 A	57 A	65 A factory / 65 A field
Voltage	450 V	450 V	600 V
Wire section	10 mm <sup>2</sup>	10 mm <sup>2</sup>	6 ÷ 30 AWG
Torque	1.2 Nm	1.2 Nm	15.8 Lb-in

FILE

CA02.01616

40014733

E178356

**MATERIALS**

Housing

Screw

Clamp

Terminal

PA - UL 94 V0

Galvanized steel

Nickel-plated copper alloy

Tin-plated copper alloy

**COLOURS**

Standard



On request

