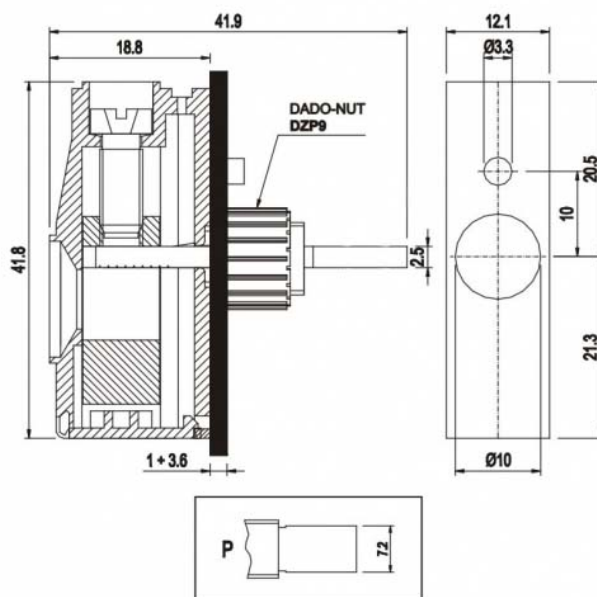


# MPT1612-P



## GENERAL INFORMATION

pitch	12,1 mm
Height	41.8 mm
Depth	18.8 mm
Dimensional class	n/a
Wire section	16 mm <sup>2</sup> / 6 AWG
Clamp opening size	-
Wire stripping	max 17 mm
Operating temperature	-40 ÷ +130 °C

## ELECTRICAL CHARACTERISTICS

Current	76 A
Voltage	450 V

## MECHANICAL CHARACTERISTICS

Screw	M5
Recommended torque	2÷2.2 Nm / 18÷19.8 in.lbs

## APPROVALS DATA



Current	-	76 A
Voltage	-	450 V
Wire section	-	16 mm <sup>2</sup>
Torque	-	2 Nm
FILE	-	40016489

<b>UL 1059</b>
85 A factory / 85 A field
600 V
4 AWG
18 Lb-in
E178356

## MATERIALS

Housing  
Screw  
Clamp  
Terminal

PA - UL 94 V0  
Galvanized steel  
Nickel-plated copper alloy  
Tin-plated copper alloy

**COLOURS**

Standard



On request



**POLES**

01

**NAME**

MPT1612-P

**3D FILE**

File available