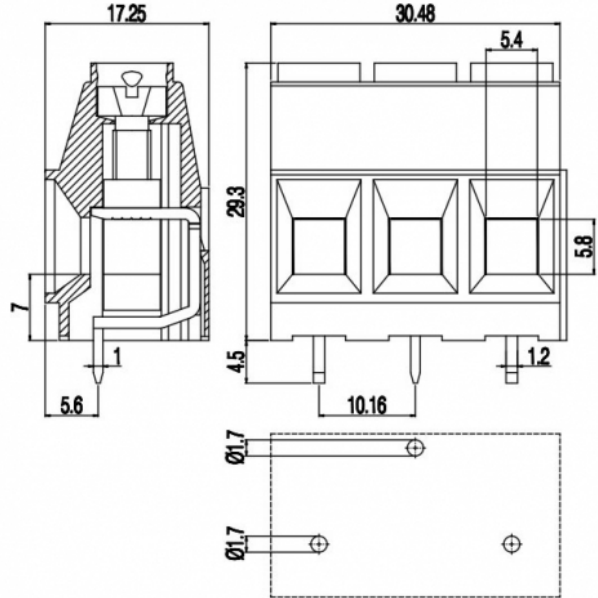


MV10_-10,16-V-A



GENERAL INFORMATION

pitch	10,16 mm
Height	29.3 mm
Depth	17.25 mm
Dimensional class	Alta
Wire section	10 mm ² / 8 AWG
Clamp opening size	5.4 x 5.8 mm
Wire stripping	max 15 mm
Operating temperature	-40 ÷ +130 °C

ELECTRICAL CHARACTERISTICS

Current	42 A
Voltage	750 V
Test Voltage	3 kVrms/60s

MECHANICAL CHARACTERISTICS

Screw	M4
Recommended torque	1.2÷1.5 Nm / 10.8÷13.6 in.lbs

APPROVALS DATA



Current	-	EN 60998-1	49 A
Voltage	-		750 V
Wire section	-		16 mm ²
Torque	-		1.5 Nm
FILE	-		40034945

UL 1059
42 A factory / 42 A field
300 V
8 ÷ 30 AWG
10.8 Lb-in
E178356

MATERIALS

Housing	PA - UL 94 V0
Screw	Galvanized steel
Clamp	Nickel-plated copper alloy

Terminal
SCIP Number
COLOURS

Tin-plated copper alloy
0e22b4d0-f741-437c-bf88-e67efc1bf4a7



On request



POLES

2
3

NAME

MV102-10,16-V-A
MV103-10,16-V-A

3D FILE

File not available for this product
File not available for this product