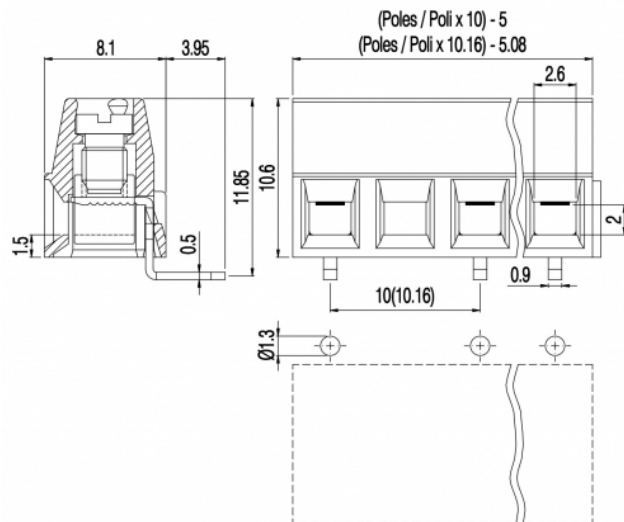


MV15_-10-H



GENERAL INFORMATION

pitch	10 mm
Height	10.6 mm
Depth	8.1 mm
Dimensional class	Bassa
Wire section	1.5 mm² / 16 AWG
Clamp opening size	2.6 x 2 mm
Wire stripping	max 6 mm
Operating temperature	-40 ÷ +130 °C

ELECTRICAL CHARACTERISTICS

Current	13.5 A
Voltage	750 V
impulse voltage	3 kV

MECHANICAL CHARACTERISTICS

Screw	M3
Recommended torque	0.5÷0.55 Nm / 4.5÷4.9 in.lbs

APPROVALS DATA



	EN 60998-1		UL 1059
Current	13.5 A	-	13.5 A factory / 10 A field
Voltage	750 V	-	600 V
Wire section	1.5 mm²	-	16 AWG
Torque	0.5 Nm	-	4.5 Lb-in
FILE	EQ202	-	E178356
MATERIALS			
Housing			PA - UL 94 V0
Screw			Galvanized steel
Clamp			Nickel-plated copper alloy

Terminal						Tin-plated copper alloy	
SCIP Number						8e28a064-07ab-45c1-afc0-7873209ceda4	
COLOURS							
Standard						On request	
	<div>GN</div>	<div>GY</div>	<div>BK</div>	<div>BL</div>	<div>RD</div>	<div>YL</div>	<div>OG</div>
POLES	NAME					3D FILE	
1	MV151-10-H					File not available for this product	
2	MV152-10-H					File not available for this product	
3	MV153-10-H					File not available for this product	
4	MV154-10-H					File not available for this product	
5	MV155-10-H					File not available for this product	
6	MV156-10-H					File not available for this product	