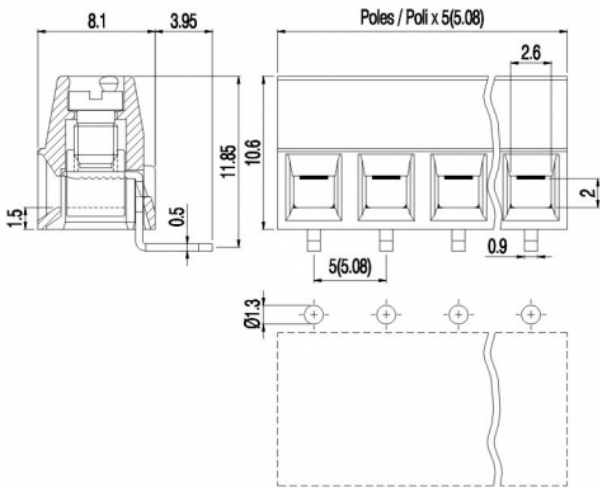
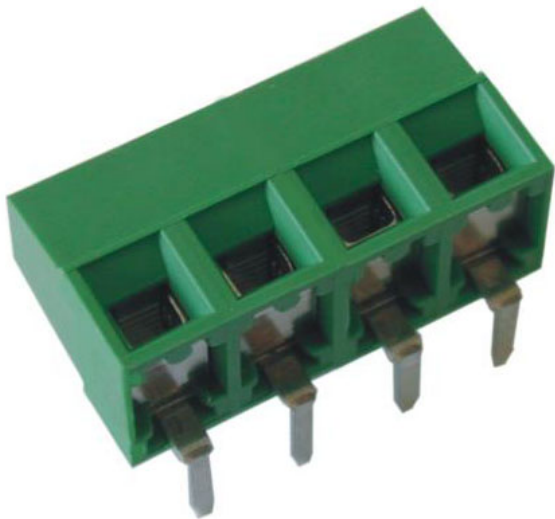


MV15_-5-H-L



GENERAL INFORMATION

pitch	5 mm
Height	10.6 mm
Depth	8.1 mm
Dimensional class	Bassa
Wire section	1.5 mm² / 16 AWG
Clamp opening size	2.6 x 2 mm
Wire stripping	max 6 mm
Operating temperature	-40 ÷ +130 °C

ELECTRICAL CHARACTERISTICS

Current	13.5 A
Voltage	250 V
Test Voltage	2 kVrms/60s

MECHANICAL CHARACTERISTICS

Screw	M3
Recommended torque	0.5÷0.55 Nm / 4.5÷4.9 in.lbs

APPROVALS DATA



	EN 60998-1		UL 1059
Current	13.5 A	-	13.5 A factory / 10 A field
Voltage	250 V	-	300 V
Wire section	1.5 mm²	-	16 ÷ 30 AWG
Torque	0.5 Nm	-	4.5 Lb-in
FILE	EQ202	-	E178356
MATERIALS			
Housing			PA - UL 94 V0
Screw			Galvanized steel
Clamp			Nickel-plated copper alloy
Terminal			Tin-plated copper alloy
SCIP Number			8e28a064-07ab-45c1-afc0-7873209ceda4

COLOURS

Standard



POLES

- 2
- 3
- 4
- 5
- 6
- 7
- 8
- 9
- 10
- 11
- 12

NAME

- MV152-5-H-L
- MV153-5-H-L
- MV154-5-H-L
- MV155-5-H-L
- MV156-5-H-L
- MV157-5-H-L
- MV158-5-H-L
- MV159-5-H-L
- MV1510-5-H-L
- MV1511-5-H-L
- MV1512-5-H-L

3D FILE

- File not available for this product
- File not available for this product
- File not available for this product
- File not available for this product
- File not available for this product
- File not available for this product
- File not available for this product
- File not available for this product
- File not available for this product
- File not available for this product
- File not available for this product