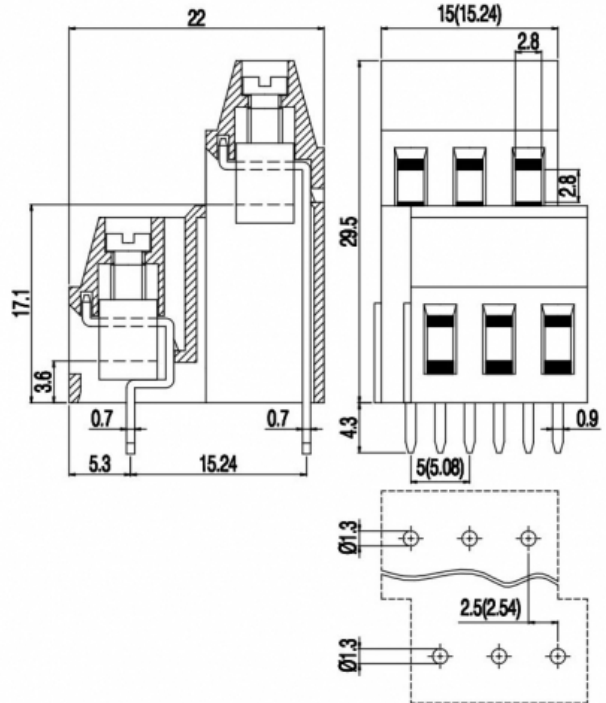


MVD25_-5-V



GENERAL INFORMATION

pitch	5 mm
Height	19.5 mm
Depth	22 mm
Dimensional class	Media
Wire section	2.5 mm ² / 14 AWG
Clamp opening size	2.8 x 2.8 mm
Wire stripping	max 8 mm
Operating temperature	-40 ÷ +130 °C

ELECTRICAL CHARACTERISTICS

Current	16 A
Voltage	450 V
Test Voltage	2.5 kVrms/60s

MECHANICAL CHARACTERISTICS

Screw	M3
Recommended torque	0.5÷0.55 Nm / 4.5÷4.9 in.lbs

APPROVALS DATA



	EN 60998-1	EN 60998-1	UL 1059
Current	16 A	16 A	16 A factory / 15 A field
Voltage	450 V	450 V	300 V
Wire section	2.5 mm ²	2.5 mm ²	14 ÷ 30 AWG
Torque	0.5 Nm	0.5 Nm	4.5 Lb-in
FILE	EP149	40023956	E178356

MATERIALS

Housing

Screw

Clamp

Terminal

SCIP Number

PA - UL 94 V0
Galvanized steel
Nickel-plated copper alloy
Tin-plated copper alloy
d43eb503-c5ae-453d-8946-4a35d54d6478

COLOURS

Standard



On request



POLES

2

3

NAME

MVD252-5-V

MVD253-5-V

3D FILE

File available

File available