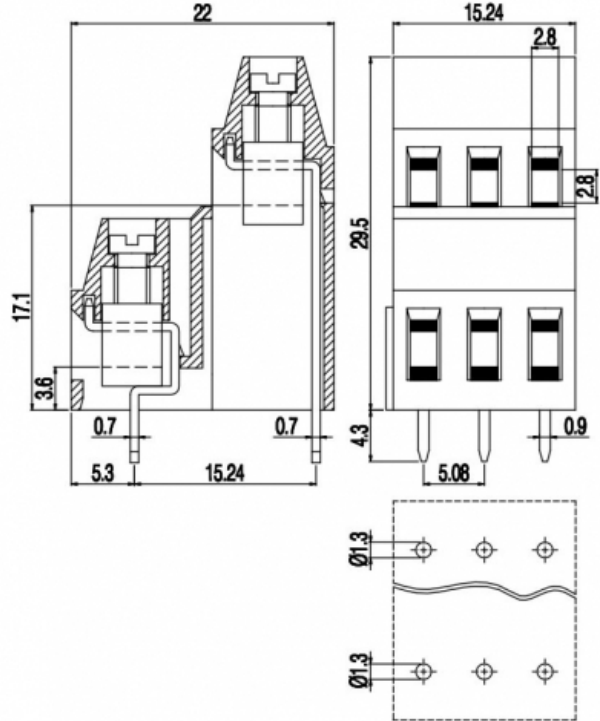


# MVDK25\_-5,08-V



## GENERAL INFORMATION

pitch	5,08 mm
Height	29,5 mm
Depth	22 mm
Dimensional class	Media
Wire section	2,5 mm <sup>2</sup> / 14 AWG
Clamp opening size	2,8 x 2,8 mm
Wire stripping	max 8 mm
Operating temperature	-40 ÷ +130 °C

## ELECTRICAL CHARACTERISTICS

Current	16 A
Voltage	450 V
Test Voltage	2,5 kVrms/60s

## MECHANICAL CHARACTERISTICS

Screw	M3
Recommended torque	0,5÷0,55 Nm / 4,5÷4,9 in.lbs

## APPROVALS DATA



	<b>EN 60998-1</b>	<b>EN 60998-1</b>	<b>UL 1059</b>
Current	16 A	16 A	16 A factory / 15 A field
Voltage	450 V	450 V	300 V
Wire section	2,5 mm <sup>2</sup>	2,5 mm <sup>2</sup>	14 ÷ 30 AWG
Torque	0,5 Nm	0,5 Nm	4,5 Lb-in
FILE	EP149	40023956	E178356

**MATERIALS**

Housing

Screw

Clamp

Terminal

SCIP Number

**COLOURS**

Standard



On request



**POLES**

2

3

**NAME**

MVDK252-5,08-V

MVDK253-5,08-V

**3D FILE**

File available

File available