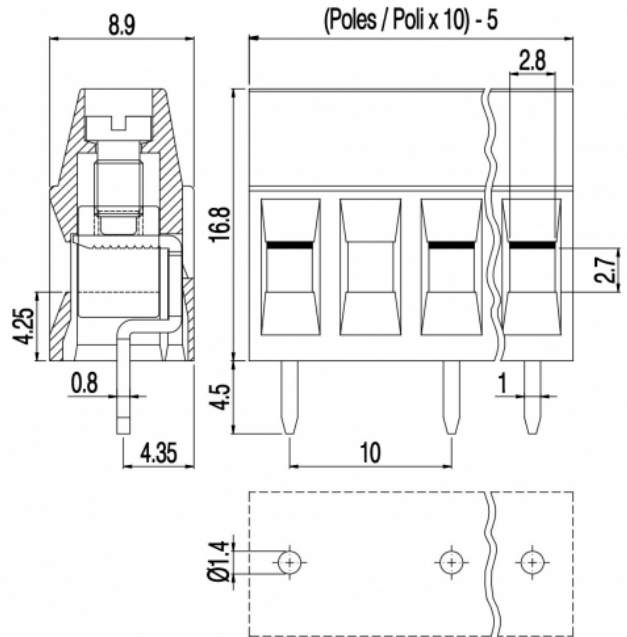


MVE25_-10-V-L



GENERAL INFORMATION

pitch	10 mm
Height	16.8 mm
Depth	8.9 mm
Dimensional class	Media
Wire section	2.5 mm ² / 14 AWG
Clamp opening size	2.8 x 2.7 mm
Wire stripping	max 7 mm
Operating temperature	-40 ÷ +130 °C

ELECTRICAL CHARACTERISTICS

Current	16 A
Voltage	750 V
Test Voltage	3 kVrms/60s

MECHANICAL CHARACTERISTICS

Screw	M3
Recommended torque	0.5÷0.55 Nm / 4.5÷4.9 in.lbs

APPROVALS DATA



	EN 60998-1	EN 60998-1	UL 1059
Current	16 A	16 A	16 A factory / 15 A field
Voltage	750 V	750 V	600 V
Wire section	2.5 mm ²	2.5 mm ²	14 ÷ 30 AWG
Torque	0.5 Nm	0.5 Nm	4.5 Lb-in
FILE	EP149	40023956	E178356

MATERIALS

Housing	PA - UL 94 V0
Screw	Galvanized steel

Clamp
Terminal
SCIP Number
COLOURS

Nickel-plated copper alloy
Tin-plated copper alloy
f1067497-248c-4560-9934-2bc3dfa74a42

Standard



On request



POLES

- 2
- 3
- 4
- 5
- 6

NAME

- MVE252-10-V-L
- MVE253-10-V-L
- MVE254-10-V-L
- MVE255-10-V-L
- MVE256-10-V-L

3D FILE

- File available
- File available
- File available
- File available
- File available