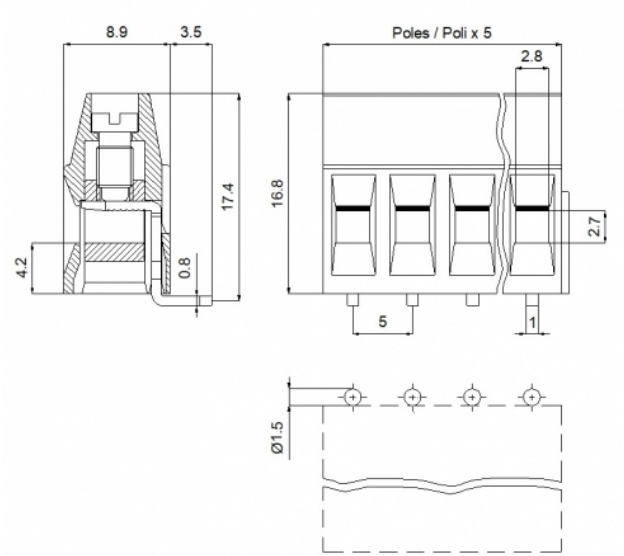
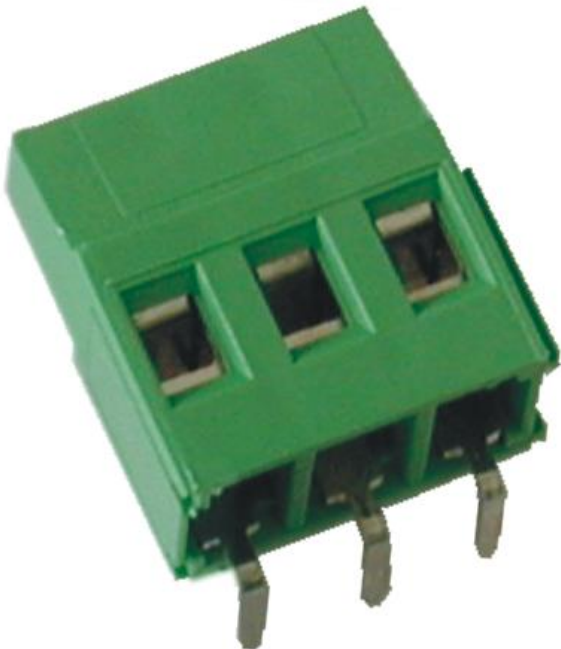


MVE25_-5-H



GENERAL INFORMATION

pitch	5 mm
Height	16.8 mm
Depth	8.9 mm
Dimensional class	Media
Wire section	2.5 mm² / 14 AWG
Clamp opening size	2.8 x 2.8 mm
Wire stripping	max 7 mm
Operating temperature	-40 ÷ +130 °C

ELECTRICAL CHARACTERISTICS

Current	16 A
Voltage	450 V
impulse voltage	2.5 kV

MECHANICAL CHARACTERISTICS

Screw	M3
Recommended torque	0.5÷0.55 Nm / 4.5÷4.9 in.lbs

APPROVALS DATA



	EN 60998-1	EN 60998-1	UL 1059
Current	16 A	16 A	16 A factory / 15 A field
Voltage	450 V	450 V	300 V
Wire section	2.5 mm²	2.5 mm²	14 AWG
Torque	0.5 Nm	0.5 Nm	4.5 Lb-in
FILE	EP149	40023956	E178356
MATERIALS			
Housing			PA - UL 94 V0

Screw	Galvanized steel
Clamp	Nickel-plated copper alloy
Terminal	Tin-plated copper alloy
SCIP Number	f1067497-248c-4560-9934-2bc3dfa74a42

COLOURS

Standard



On request



POLES

- 2
- 3
- 4
- 5
- 6
- 7
- 8
- 9
- 10
- 11
- 12

NAME

- MVE252-5-H
- MVE253-5-H
- MVE254-5-H
- MVE255-5-H
- MVE256-5-H
- MVE257-5-H
- MVE258-5-H
- MVE259-5-H
- MVE2510-5-H
- MVE2511-5-H
- MVE2512-5-H

3D FILE

- File available
- File available
- File available
- File available
- File available
- File not available for this product
- File not available for this product
- File not available for this product
- File not available for this product
- File not available for this product
- File not available for this product