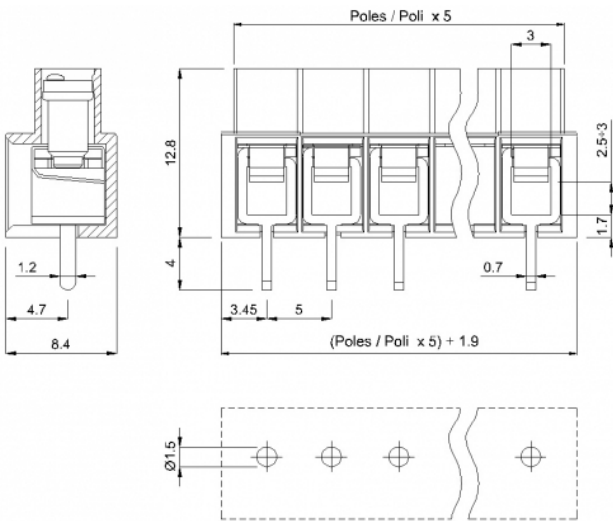
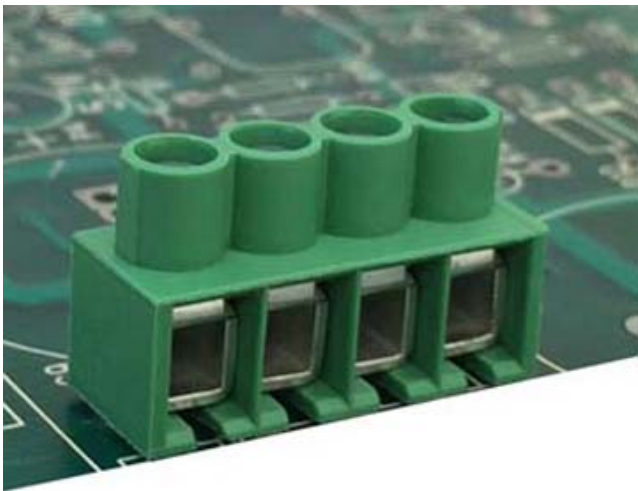


MVE26\_-5-V



GENERAL INFORMATION

pitch	5 mm
Height	12.8 mm
Depth	8.4 mm
Dimensional class	Bassa
Wire section	2.5 mm² / 14 AWG
Clamp opening size	2.6 x 3 mm
Wire stripping	max 7,5 mm
Operating temperature	-40 ÷ +130 °C

ELECTRICAL CHARACTERISTICS

Current	24 A
Voltage	450 V
impulse voltage	2,5 kV

MECHANICAL CHARACTERISTICS

Screw	M3
Recommended torque	0,5÷0 Nm / 4,5÷4.4 in.lbs

APPROVALS DATA



Current	-
Voltage	-
Wire section	-
Torque	-
FILE	-

EN 60998-1
24 A
450 V
2,5 mm²
0,5 Nm
40019705

UL 1059
26 A factory / 20 A field
300 V
12 AWG
4,5 Lb-in
E178356

MATERIALS

Housing	PA - UL 94 V0
Screw	Galvanized steel
Clamp	Tin-plated copper alloy
Terminal	Tin-plated copper alloy

COLOURS

Standard

On request



POLES	NAME	3D FILE
2	MVE262-5-V	File not available for this product
3	MVE263-5-V	File not available for this product
4	MVE264-5-V	File not available for this product
5	MVE265-5-V	File not available for this product
6	MVE266-5-V	File not available for this product
7	MVE267-5-V	File not available for this product
8	MVE268-5-V	File not available for this product
9	MVE269-5-V	File not available for this product
10	MVE2610-5-V	File not available for this product
11	MVE2611-5-V	File not available for this product
12	MVE2612-5-V	File not available for this product
13	MVE2613-5-V	File not available for this product
14	MVE2614-5-V	File not available for this product
15	MVE2615-5-V	File not available for this product
16	MVE2616-5-V	File not available for this product
17	MVE2617-5-V	File not available for this product
18	MVE2618-5-V	File not available for this product
19	MVE2619-5-V	File not available for this product
20	MVE2620-5-V	File not available for this product
21	MVE2621-5-V	File not available for this product
22	MVE2622-5-V	File not available for this product
23	MVE2623-5-V	File not available for this product
24	MVE2624-5-V	File not available for this product