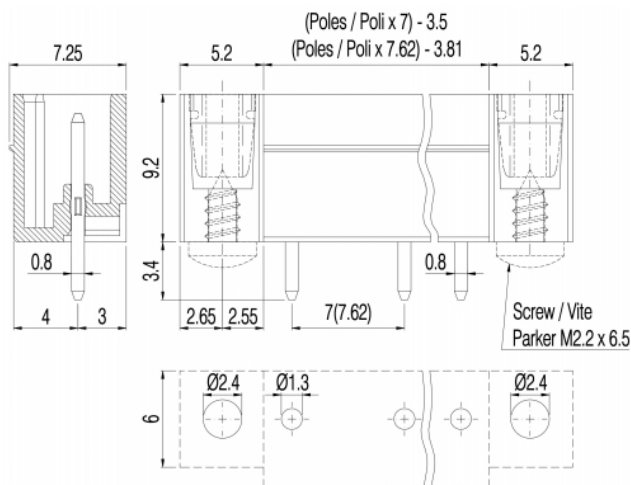
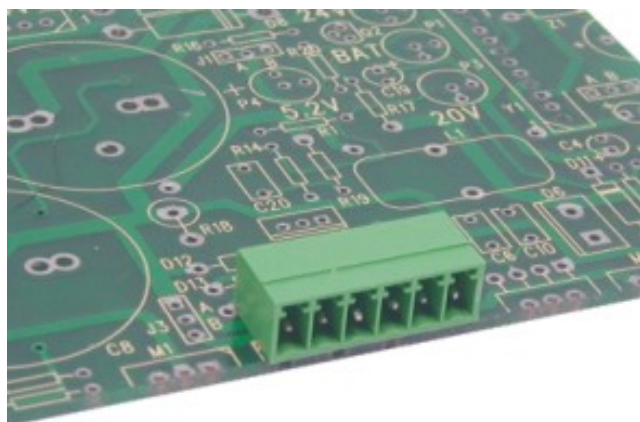


# PV\_\_-7-V-K



## GENERAL INFORMATION

pitch	7 mm
Height	9.2 mm
Depth	7.25 mm
Dimensional class	Bassa
Wire section	-
Clamp opening size	-
Wire stripping	-
Operating temperature	-40 ÷ +130 °C

## ELECTRICAL CHARACTERISTICS

Current	11 A
Voltage	500 V
Test Voltage	6 kVrms/60s

## MECHANICAL CHARACTERISTICS

Screw	-
Recommended torque	-

## APPROVALS DATA



Current	-	EN 61984	UL 1059
Voltage	-	11 A	11 A factory / 11 A field
Wire section	-	400 V	300 V
Torque	-	-	-
FILE	-	40048261	E178356

## MATERIALS

Housing	PA - UL 94 V0
Screw	-
Clamp	-
Terminal	Tin-plated copper alloy
SCIP Number	892ed63d-670d-4367-9365-34dfcaff593c

## COLOURS

Standard

On request



**POLES**

02  
03  
04  
05  
06  
07  
08  
09  
10  
11

**NAME**

PV02-7-V-K  
PV03-7-V-K  
PV04-7-V-K  
PV05-7-V-K  
PV06-7-V-K  
PV07-7-V-K  
PV08-7-V-K  
PV09-7-V-K  
PV10-7-V-K  
PV11-7-V-K

**3D FILE**

File not available for this product  
File not available for this product  
File not available for this product  
File not available for this product  
File not available for this product  
File not available for this product  
File not available for this product  
File not available for this product  
File not available for this product  
File not available for this product