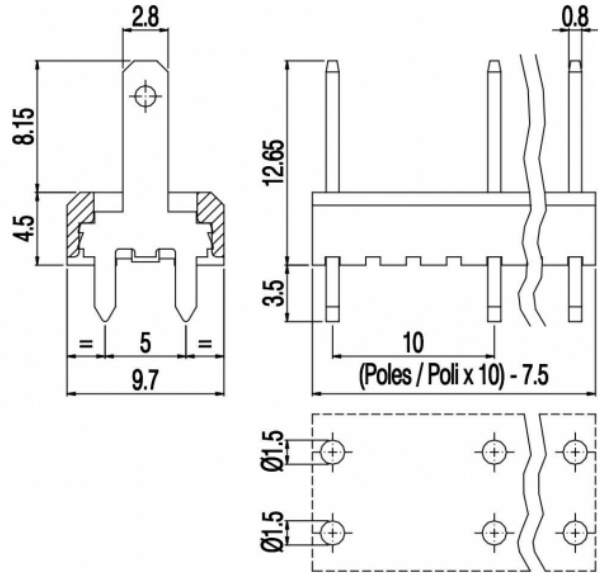
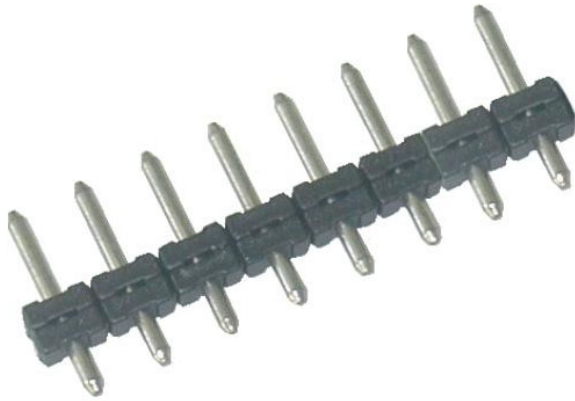


PVSF__-10-V-D28



GENERAL INFORMATION

pitch	10 mm
Height	12.65 mm
Depth	9.7 mm
Dimensional class	n/a
Wire section	-
Clamp opening size	-
Wire stripping	-
Operating temperature	-40 ÷ +130 °C

ELECTRICAL CHARACTERISTICS

Current	17,5 A
Voltage	630 V
Test Voltage	6 kVrms/60s

MECHANICAL CHARACTERISTICS

Screw	-
Recommended torque	-

APPROVALS DATA



Current	-	-	UL 1059
Voltage	-	-	10 A factory / 5 A field
Wire section	-	-	300 V
Torque	-	-	-
FILE	-	-	E178356

MATERIALS

Housing	PA - UL 94 V0
Screw	-
Clamp	-
Terminal	Tin-plated copper alloy

SCIP Number

COLOURS

Standard



On request



POLES

- 02
- 03
- 04
- 05
- 06
- 07
- 08
- 09
- 10
- 11
- 12
- 13
- 14
- 15

NAME

- PVSF02-10-V-D28
- PVSF03-10-V-D28
- PVSF04-10-V-D28
- PVSF05-10-V-D28
- PVSF06-10-V-D28
- PVSF07-10-V-D28
- PVSF08-10-V-D28
- PVSF09-10-V-D28
- PVSF10-10-V-D28
- PVSF11-10-V-D28
- PVSF12-10-V-D28
- PVSF13-10-V-D28
- PVSF14-10-V-D28
- PVSF15-10-V-D28

3D FILE

- File not available for this product
- File not available for this product
- File not available for this product
- File not available for this product
- File not available for this product
- File not available for this product
- File not available for this product
- File not available for this product
- File not available for this product
- File not available for this product
- File not available for this product
- File not available for this product
- File not available for this product
- File not available for this product
- File not available for this product