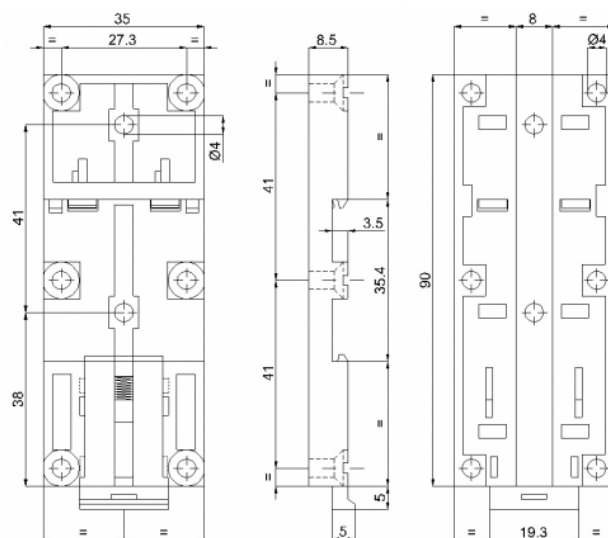
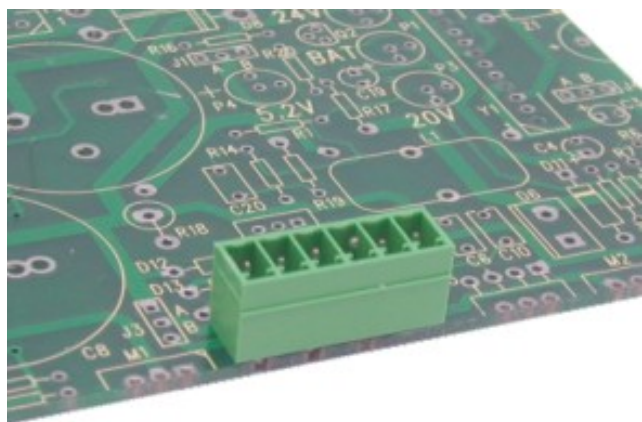


SDA



GENERAL INFORMATION

pitch

Height

Depth

Dimensional class

Wire section

Clamp opening size

Wire stripping

Operating temperature

-40 ÷ +70 °C

ELECTRICAL CHARACTERISTICS

Current

Voltage

impulse voltage

MECHANICAL CHARACTERISTICS

Screw

Recommended torque

APPROVALS DATA



Current

Voltage

Wire section

Torque

FILE

MATERIALS

Housing

Screw

Clamp

Terminal

COLOURS

Standard

On request



POLES
01



NAME
SDA

3D FILE
File available