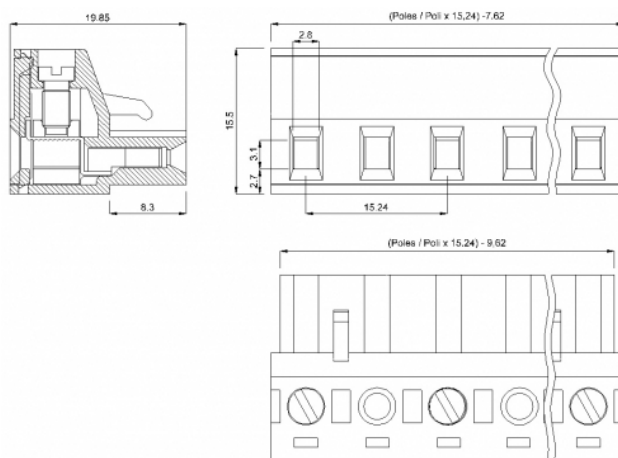
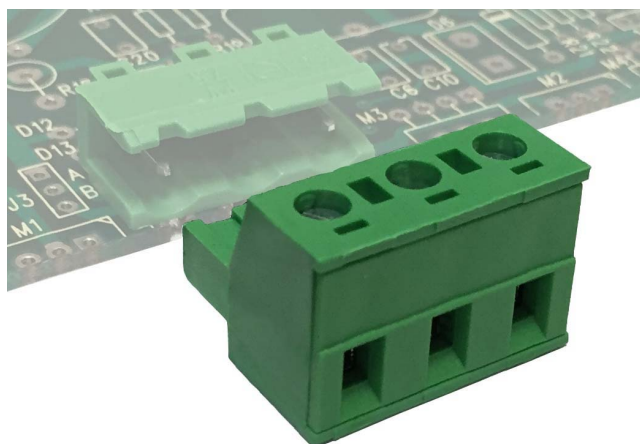


SH__-15,24



GENERAL INFORMATION

pitch	15,24 mm
Height	15.50 mm
Depth	19.85 mm
Dimensional class	Media
Wire section	2.5 mm ² / 14 AWG
Clamp opening size	2.8 x 3.1 mm
Wire stripping	max 8 mm
Operating temperature	-40 ÷ +130 °C

ELECTRICAL CHARACTERISTICS

Current	16 A
Voltage	1000 V
Test Voltage	8 kVrms/60s

MECHANICAL CHARACTERISTICS

Screw	M3
Recommended torque	0.5÷0.55 Nm / 4.5÷4.9 in.lbs

APPROVALS DATA



Current	16 A
Voltage	500 V
Wire section	2.5 mm ²
Torque	0.5 Nm
FILE	CA02.04178

EN 60998-1

EN 60998-1

15 A
500 V
2.5 mm ²
0.5 Nm
40005779

UL 1059

12 A factory / 12 A field
600 V
14 ÷ 30 AWG
4.5 Lb-in
E178356

MATERIALS

Housing	PA - UL 94 V0
Screw	Galvanized steel
Clamp	Nickel-plated copper alloy
Terminal	Nickel-plated copper alloy
SCIP Number	2b16c5e0-b81c-4d1f-839d-5472703af01d

COLOURS

Standard

On request



POLES

02
03
04
05



NAME

SH02-15,24
SH03-15,24
SH04-15,24
SH05-15,24

3D FILE

File not available for this product
File not available for this product
File not available for this product
File not available for this product