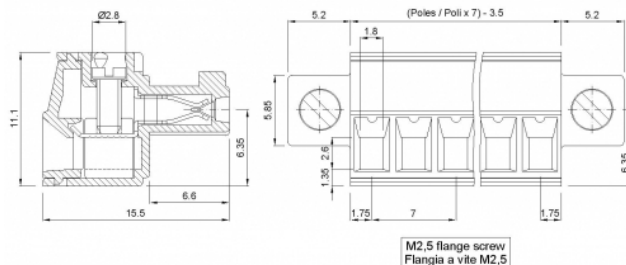


SH__-7-K



GENERAL INFORMATION

pitch	7 mm
Height	11.1 mm
Depth	15.5 mm
Dimensional class	Media
Wire section	2.5 mm ² / 14 AWG
Clamp opening size	1.8 x 2.6 mm
Wire stripping	max 8 mm
Operating temperature	-40 ÷ +130 °C

ELECTRICAL CHARACTERISTICS

Current	11 A
Voltage	500 V
Test Voltage	6 kVrms/60s

MECHANICAL CHARACTERISTICS

Screw	M2
Recommended torque	0.25÷0.27 Nm / 2.3÷2.5 in.lbs

APPROVALS DATA



Current	-	EN 61984	11 A	UL 1059	11 A factory / 11 A field
Voltage	-		400 V		300 V
Wire section	-		2.5 mm ²		14 ÷ 30 AWG
Torque	-		0.25 Nm		2.3 Lb-in
FILE	-		40048261		E178356

MATERIALS

Housing	PA - UL 94 V0
Screw	Galvanized steel
Clamp	Nickel-plated copper alloy
Terminal	Copper alloy
SCIP Number	bfb0c281-a82f-4739-a58f-ccd9c58cc7dd

COLOURS

Standard

On request



POLES

02
03
04
05
06
07
08
09
10
11

NAME

SH02-7-K
SH03-7-K
SH04-7-K
SH05-7-K
SH06-7-K
SH07-7-K
SH08-7-K
SH09-7-K
SH10-7-K
SH11-7-K

3D FILE

File available
File available
File available
File available
File available
File available
File available
File available
File available
File available