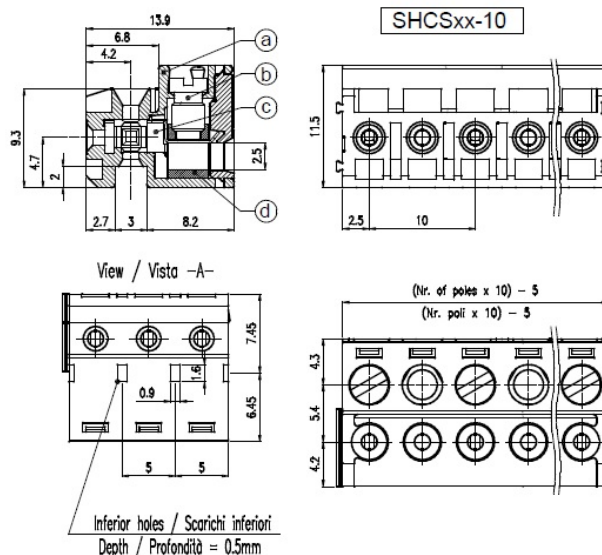


# SHCS\_\_-10



## GENERAL INFORMATION

pitch	10 mm
Height	11,5 mm
Depth	13,9 mm
Dimensional class	Media
Wire section	2,5 mm <sup>2</sup> / 14 AWG
Clamp opening size	2,5 x 2,5 mm
Wire stripping	max 7 mm
Operating temperature	-40 ÷ +130 °C

## ELECTRICAL CHARACTERISTICS

Current	15 A
Voltage	630 V
Test Voltage	6 kVrms/60s

## MECHANICAL CHARACTERISTICS

Screw	M3
Recommended torque	0,5÷0,55 Nm / 4,5÷4,9 in.lbs

## APPROVALS DATA



Current	-	<b>EN 61984</b> 20 A	<b>UL 1059</b> 18 A factory / 15 A field
Voltage	-	500 V	600 V
Wire section	-	0.2÷2.5 mm <sup>2</sup>	14 ÷ 30 AWG
Torque	-	0.5 Nm	4,5 Lb-in
FILE	-	40053107	E178356

## MATERIALS

Housing	PA - UL 94 V0
Screw	Galvanized steel
Clamp	Nickel-plated copper alloy
Terminal	Tin-plated copper alloy

SCIP Number

8f3ed649-5dcd-4973-a9c9-d71b7f8f530d

**COLOURS**

Standard



On request



**POLES**

- 02
- 03
- 04
- 05
- 06

**NAME**

- SHCS02-10
- SHCS03-10
- SHCS04-10
- SHCS05-10
- SHCS06-10

**3D FILE**

- File available
- File available
- File available
- File available
- File available