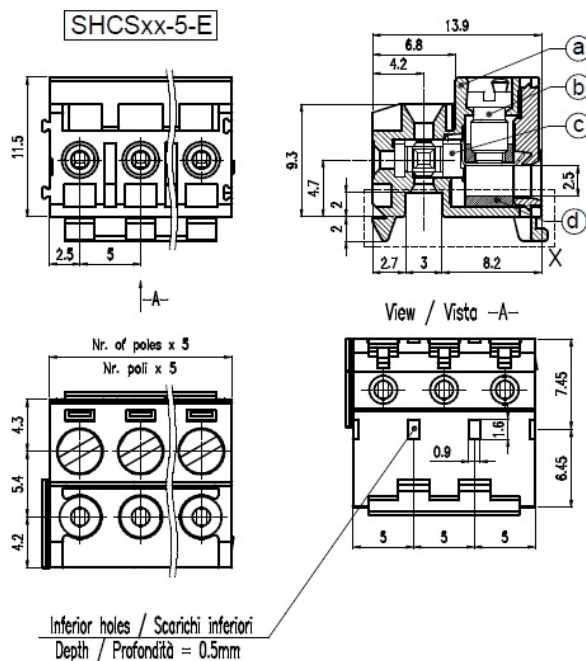


SHCS__-5-E



GENERAL INFORMATION

pitch	5 mm
Height	11.5 mm
Depth	13.9 mm
Dimensional class	Media
Wire section	2,5 mm ² / 14 AWG
Clamp opening size	2,5 x 2,5 mm
Wire stripping	max 7 mm
Operating temperature	-40 ÷ +130 °C

ELECTRICAL CHARACTERISTICS

Current	15 A
Voltage	250 V
Test Voltage	4 kVrms/60s

MECHANICAL CHARACTERISTICS

Screw	M3
Recommended torque	0,5÷0,55 Nm / 4,5÷4,9 in.lbs

APPROVALS DATA



Current	-	EN 61984	20 A	UL 1059	18 A factory / 15 A field
Voltage	-		200 V		300 V
Wire section	-		0.2÷2.5 mm ²		14 ÷ 30 AWG
Torque	-		0.5 Nm		4,5 Lb-in
FILE	-		40053107		E178356

MATERIALS

Housing		PA - UL 94 V0
---------	--	---------------

Screw
 Clamp
 Terminal
 SCIP Number

Galvanized steel
 Nickel-plated copper alloy
 Tin-plated copper alloy
 8f3ed649-5dcd-4973-a9c9-d71b7f8f530d

COLOURS

Standard



On request



POLES

- 02
- 03
- 04
- 05
- 06
- 07
- 08
- 09
- 10
- 11
- 12

NAME

- SHCS02-5-E
- SHCS03-5-E
- SHCS04-5-E
- SHCS05-5-E
- SHCS06-5-E
- SHCS07-5-E
- SHCS08-5-E
- SHCS09-5-E
- SHCS10-5-E
- SHCS11-5-E
- SHCS12-5-E

3D FILE

- File available
- File available
- File not available for this product
- File not available for this product
- File not available for this product
- File not available for this product
- File not available for this product
- File not available for this product
- File not available for this product
- File not available for this product
- File not available for this product