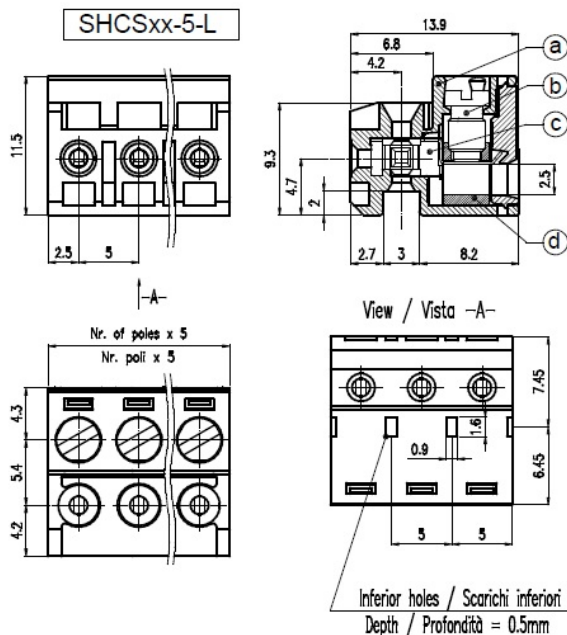
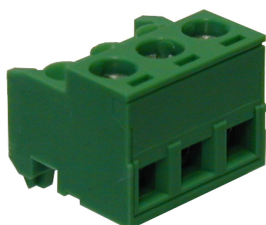


# SHCS\_\_-5-L



## GENERAL INFORMATION

pitch	5 mm
Height	11.5 mm
Depth	13.9 mm
Dimensional class	Media
Wire section	2,5 mm <sup>2</sup> / 14 AWG
Clamp opening size	2,5 x 2,5 mm
Wire stripping	max 7 mm
Operating temperature	-40 ÷ +130 °C

## ELECTRICAL CHARACTERISTICS

Current	15 A
Voltage	250 V
Test Voltage	4 kVrms/60s

## MECHANICAL CHARACTERISTICS

Screw	M3
Recommended torque	0,5÷0,55 Nm / 4,5÷4,9 in.lbs

## APPROVALS DATA



Current	-	<b>EN 61984</b>	20 A	<b>UL 1059</b>	18 A factory / 15 A field
Voltage	-		200 V		300 V
Wire section	-		0.2÷2.5 mm <sup>2</sup>		14 ÷ 30 AWG
Torque	-		0.5 Nm		4,5 Lb-in
FILE	-		40053107		E178356

## MATERIALS

Housing					PA - UL 94 V0
---------	--	--	--	--	---------------

Screw  
 Clamp  
 Terminal  
 SCIP Number

Galvanized steel  
 Nickel-plated copper alloy  
 Tin-plated copper alloy  
 8f3ed649-5dcd-4973-a9c9-d71b7f8f530d

**COLOURS**

Standard



On request



**POLES**

- 2
- 3
- 4
- 5
- 6
- 7
- 8
- 9
- 10
- 11
- 12

**NAME**

- SHCS2-5-L
- SHCS3-5-L
- SHCS4-5-L
- SHCS5-5-L
- SHCS6-5-L
- SHCS7-5-L
- SHCS8-5-L
- SHCS9-5-L
- SHCS10-5-L
- SHCS11-5-L
- SHCS12-5-L

**3D FILE**

- File not available for this product
- File not available for this product
- File not available for this product
- File not available for this product
- File not available for this product
- File not available for this product
- File not available for this product
- File not available for this product
- File not available for this product
- File available
- File available
- File available