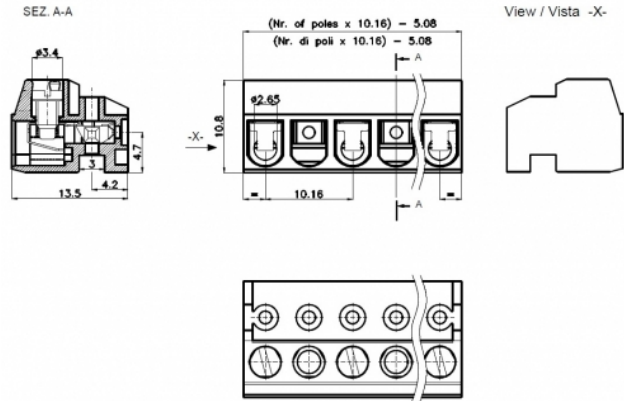


SHS__-10,16-L



SHSxx-10,16-L



GENERAL INFORMATION

| | |
|-----------------------|------------------------------|
| pitch | 10 mm |
| Height | 10.8 mm |
| Depth | 13.5 mm |
| Dimensional class | Media |
| Wire section | 1.5 mm ² / 16 AWG |
| Clamp opening size | - |
| Wire stripping | max 6 mm |
| Operating temperature | -40 ÷ +130 °C |

ELECTRICAL CHARACTERISTICS

| | |
|--------------|-------------|
| Current | 10 A |
| Voltage | 630 V |
| Test Voltage | 6 kVrms/60s |

MECHANICAL CHARACTERISTICS

| | |
|--------------------|------------------------------|
| Screw | M2.5 |
| Recommended torque | 0.4÷0.44 Nm / 3.6÷3.9 in.lbs |

APPROVALS DATA



| | EN 61984 | UL 1059 |
|--------------|----------|---------------------------|
| Current | 12 A | 10 A factory / 10 A field |
| Voltage | 500 V | 300 V |
| Wire section | - | 16 ÷ 30 AWG |
| Torque | - | 3.5 Lb-in |
| FILE | 40005779 | E178356 |

MATERIALS

| | |
|-------------|--------------------------------------|
| Housing | PA - UL 94 V0 |
| Screw | Galvanized steel |
| Clamp | Nickel-plated copper alloy |
| Terminal | Copper alloy |
| SCIP Number | f59fce50-2030-4a8c-a1d5-32dbe6d47a1f |

COLOURS

Standard



On request



POLES

- 01
- 02
- 03
- 04
- 05
- 06

NAME

- SHS01-10,16-L
- SHS02-10,16-L
- SHS03-10,16-L
- SHS04-10,16-L
- SHS05-10,16-L
- SHS06-10,16-L

3D FILE

- File not available for this product
- File not available for this product
- File not available for this product
- File not available for this product
- File not available for this product
- File not available for this product