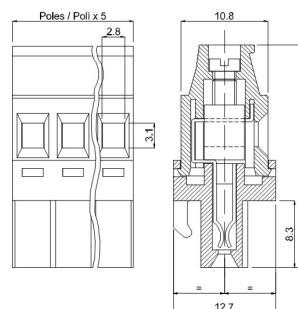
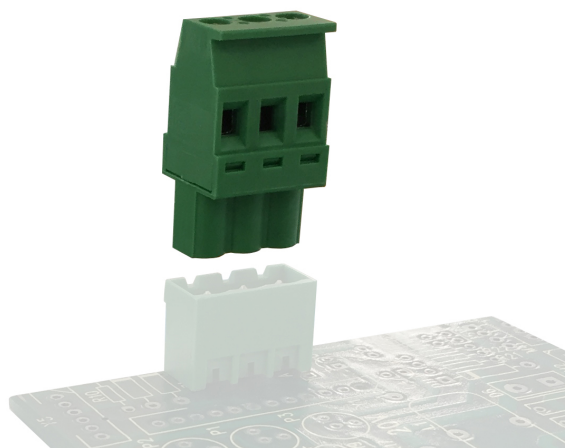


# SV\_\_-10-P



## GENERAL INFORMATION

pitch	10 mm
Height	27.6 mm
Depth	13.5 mm
Dimensional class	Media
Wire section	2.5 mm <sup>2</sup> / 14 AWG
Clamp opening size	2.8 x 3.1 mm
Wire stripping	max 9 mm
Operating temperature	-40 ÷ +130 °C

## ELECTRICAL CHARACTERISTICS

Current	16 A
Voltage	500 V
Test Voltage	6 kVrms/60s

## MECHANICAL CHARACTERISTICS

Screw	M3
Recommended torque	0.5÷0.55 Nm / 4.5÷4.9 in.lbs

## APPROVALS DATA



	EN 61984	EN 61984	UL 1059
Current	16 A	15 A	12 A factory / 12 A field
Voltage	500 V	500 V	600 V
Wire section	2.5 mm <sup>2</sup>	2.5 mm <sup>2</sup>	14 ÷ 30 AWG
Torque	0.5 Nm	0.5 Nm	4.5 Lb-in
FILE	CA02.04178	40005779	E178356

## MATERIALS

Housing	PA - UL 94 V0
Screw	Galvanized steel
Clamp	Nickel-plated copper alloy
Terminal	Nickel-plated copper alloy
SCIP Number	269cc4c7-8d06-4994-abfa-5163d2b356bd

## COLOURS

Standard



On request



**POLES**

02  
03  
04  
05  
06  
07  
08  
09  
10  
11  
12

**NAME**

SV02-10-P  
SV03-10-P  
SV04-10-P  
SV05-10-P  
SV06-10-P  
SV07-10-P  
SV08-10-P  
SV09-10-P  
SV10-10-P  
SV11-10-P  
SV12-10-P

**3D FILE**

File not available for this product  
File not available for this product  
File not available for this product  
File not available for this product  
File not available for this product  
File not available for this product  
File not available for this product  
File not available for this product  
File not available for this product  
File not available for this product  
File not available for this product