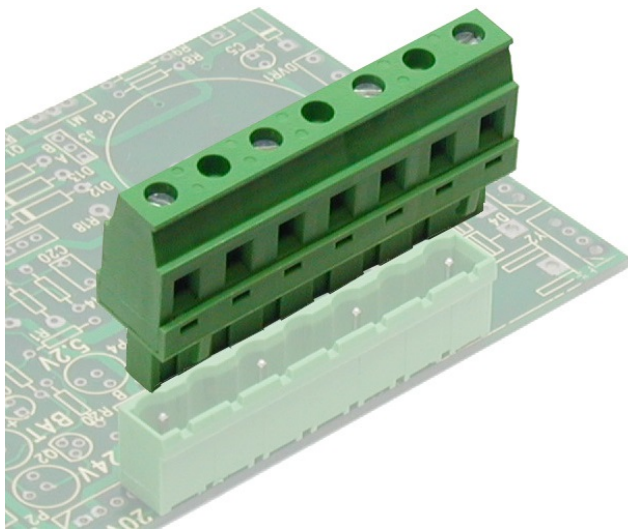


SV__-15,24-F



GENERAL INFORMATION

pitch	15,24 mm
Height	27.6 mm
Depth	12.7 mm
Dimensional class	Media
Wire section	2.5 mm ² / 14 AWG
Clamp opening size	2.8 x 3.1 mm
Wire stripping	max 9 mm
Operating temperature	-40 ÷ +130 °C

ELECTRICAL CHARACTERISTICS

Current	16 A
Voltage	1000 V
Test Voltage	6 kVrms/60s

MECHANICAL CHARACTERISTICS

Screw	M3
Recommended torque	0.5÷0.55 Nm / 4.5÷4.9 in.lbs

APPROVALS DATA



	EN 61984	EN 61984	UL 1059
Current	16 A	15 A	12 A factory / 12 A field
Voltage	500 V	400 V	600 V
Wire section	2,5 mm ²	2,5 mm ²	14 ÷ 30 AWG
Torque	0,5 Nm	0,5 Nm	4,5 Lb-in
FILE	CA02.04178	40005779	E178356

MATERIALS

Housing	PA - UL 94 V0
Screw	Galvanized steel
Clamp	-
Terminal	Nickel-plated copper alloy
SCIP Number	269cc4c7-8d06-4994-abfa-5163d2b356bd

COLOURS

Standard



On request



POLES

02
03
04
05
06
07
08

NAME

SV02-15,24-F
SV03-15,24-F
SV04-15,24-F
SV05-15,24-F
SV06-15,24-F
SV07-15,24-F
SV08-15,24-F

3D FILE

File not available for this product
File not available for this product
File not available for this product
File not available for this product
File not available for this product
File not available for this product
File not available for this product