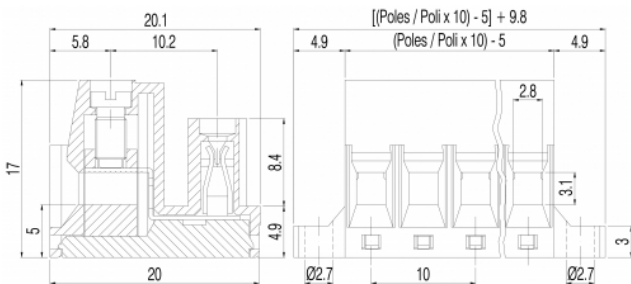
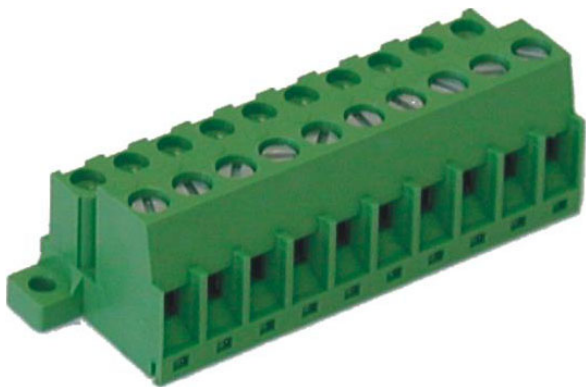


SVR__-10-K



GENERAL INFORMATION

pitch	10 mm
Height	17 mm
Depth	20 mm
Dimensional class	Media
Wire section	2.5 mm² / 14 AWG
Clamp opening size	2.8 x 3.1 mm
Wire stripping	max 9 mm
Operating temperature	-40 ÷ +130 °C

ELECTRICAL CHARACTERISTICS

Current	15 A
Voltage	500 V
impulse voltage	6 kV

MECHANICAL CHARACTERISTICS

Screw	M3
Recommended torque	0.5÷0.55 Nm / 4.5÷4.9 in.lbs

APPROVALS DATA



Current	-	-	UL 1059
Voltage	-	-	12 A factory / 12 A field
Wire section	-	-	600 V
Torque	-	-	14 AWG
FILE	-	-	4.5 Lb-in
			E178356

MATERIALS

Housing	PA - UL 94 V0
Screw	Galvanized steel
Clamp	Nickel-plated copper alloy
Terminal	Tin-plated copper alloy
SCIP Number	2b03b531-92df-4ed5-8cb8-d5dde059d488

COLOURS

Standard	On request
----------	------------



POLES

02
03
04
05
06
07
08
09
10
11

NAME

SVR02-10-K
SVR03-10-K
SVR04-10-K
SVR05-10-K
SVR06-10-K
SVR07-10-K
SVR08-10-K
SVR09-10-K
SVR10-10-K
SVR11-10-K

3D FILE

File not available for this product
File not available for this product
File not available for this product
File not available for this product
File not available for this product
File not available for this product
File not available for this product
File not available for this product
File not available for this product
File not available for this product