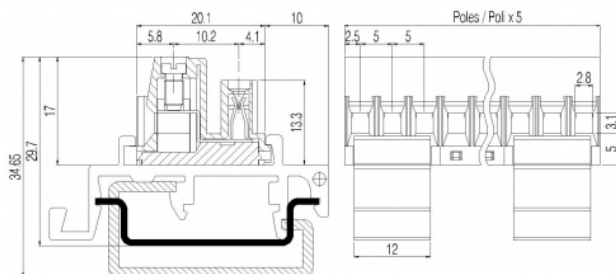
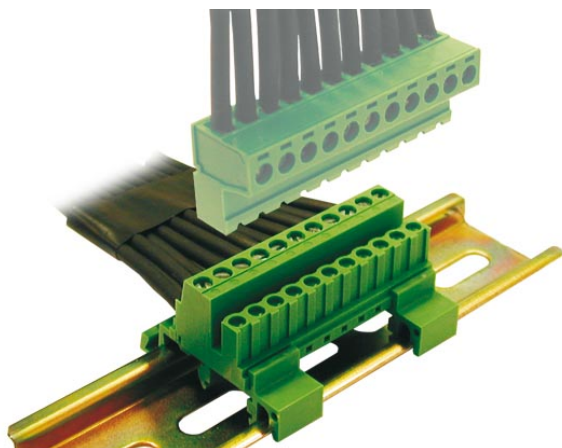


SVR__-5-DR



GENERAL INFORMATION

pitch	5 mm
Height	17 mm
Depth	20.1 mm
Dimensional class	Media
Wire section	2.5 mm ² / 14 AWG
Clamp opening size	2.8 x 3.1 mm
Wire stripping	max 9 mm
Operating temperature	-40 ÷ +130 °C

ELECTRICAL CHARACTERISTICS

Current	12 A
Voltage	250 V
Test Voltage	4 kVrms/60s

MECHANICAL CHARACTERISTICS

Screw	M3
Recommended torque	0.5÷0.55 Nm / 4.5÷4.9 in.lbs

APPROVALS DATA



Current	-	-	UL 1059
Voltage	-	-	12 A factory / 12 A field
Wire section	-	-	300 V
Torque	-	-	14 ÷ 30 AWG
FILE	-	-	4,5 Lb-in
			E178356

MATERIALS

Housing	PA - UL 94 V0
Screw	Galvanized steel
Clamp	Nickel-plated copper alloy
Terminal	Tin-plated copper alloy
SCIP Number	2b03b531-92df-4ed5-8cb8-d5dde059d488

COLOURS

Standard

On request



POLES

03
04
05
06
07
08
09
10
11
12

NAME

SVR03-5-DR
SVR04-5-DR
SVR05-5-DR
SVR06-5-DR
SVR07-5-DR
SVR08-5-DR
SVR09-5-DR
SVR10-5-DR
SVR11-5-DR
SVR12-5-DR

3D FILE

File available
File available
File available
File available
File available
File available
File available
File available
File available
File available