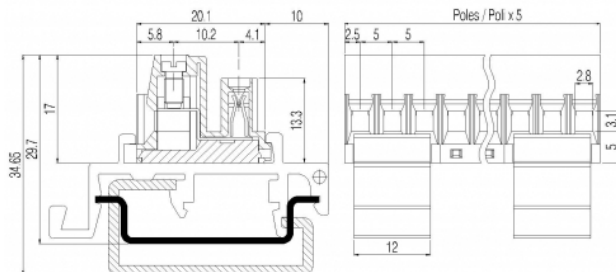
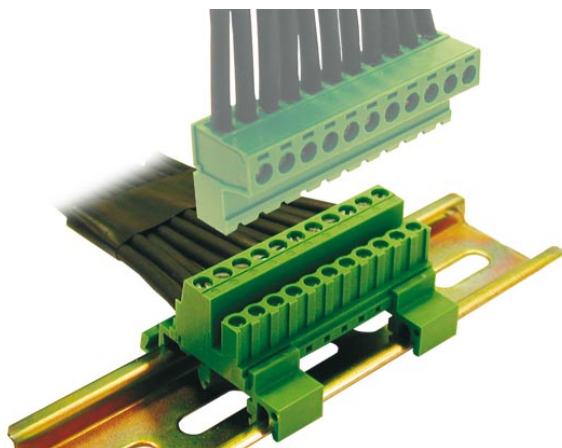


# SVR\_\_-5-DR



## GENERAL INFORMATION

pitch	5 mm
Height	17 mm
Depth	20.1 mm
Dimensional class	Media
Wire section	2.5 mm <sup>2</sup> / 14 AWG
Clamp opening size	2.8 x 3.1 mm
Wire stripping	max 9 mm
Operating temperature	-40 ÷ +130 °C

## ELECTRICAL CHARACTERISTICS

Current	12 A
Voltage	250 V
impulse voltage	4 kV

## MECHANICAL CHARACTERISTICS

Screw	M3
Recommended torque	0.5÷0.55 Nm / 4.5÷4.9 in.lbs

## APPROVALS DATA



			<b>UL 1059</b>
Current	-	-	12 A factory / 12 A field
Voltage	-	-	300 V
Wire section	-	-	14 AWG
Torque	-	-	4,5 Lb-in
FILE	-	-	E178356

## MATERIALS

Housing	PA - UL 94 V0
Screw	Galvanized steel
Clamp	Nickel-plated copper alloy
Terminal	Tin-plated copper alloy
SCIP Number	2b03b531-92df-4ed5-8cb8-d5dde059d488

## COLOURS

Standard

On request

**GN**

**GY**

**BK**

**BL**

**RD**

**YL**

**OG**

<b>POLES</b>	<b>NAME</b>	<b>3D FILE</b>
03	SVR03-5-DR	File available
04	SVR04-5-DR	File available
05	SVR05-5-DR	File available
06	SVR06-5-DR	File available
07	SVR07-5-DR	File available
08	SVR08-5-DR	File available
09	SVR09-5-DR	File available
10	SVR10-5-DR	File available
11	SVR11-5-DR	File available
12	SVR12-5-DR	File available