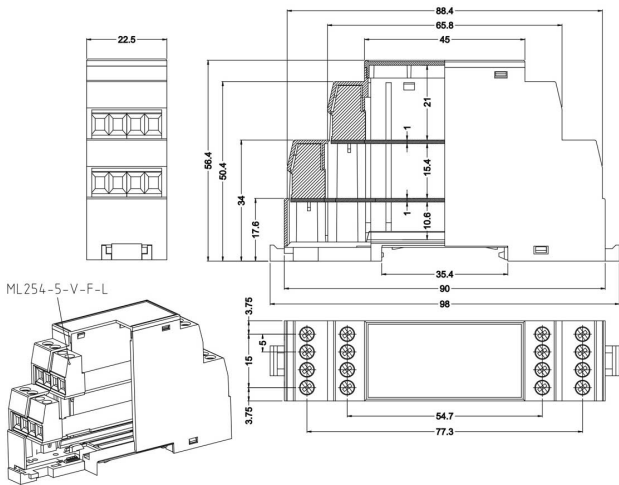
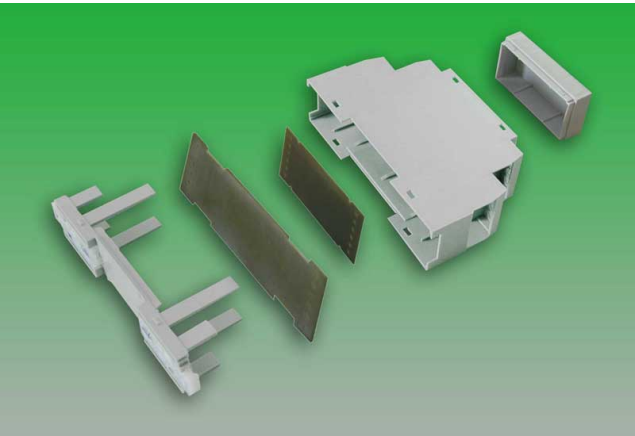


CEM22-H



GENERAL INFORMATION		
pitch		-
Height		-
Depth		-
Dimensional class		-
Wire section		Alta
Clamp opening size		-
Wire stripping		-
Operating temperature		-
ELECTRICAL CHARACTERISTICS		
Current		-
Voltage		-
MECHANICAL CHARACTERISTICS		
Screw		-
Recommended torque		-
MATERIALS		
Housing		PA - UL 94 V0
Screw		-
Clamp		-
Terminal		-
COLOURS		
Standard	On request	
<div>GY</div>	<div>GN</div> <div>BK</div> <div>BL</div> <div>RD</div> <div>YL</div> <div>OG</div>	
POLES	NAME	3D FILE
01	CEM22-H	File available