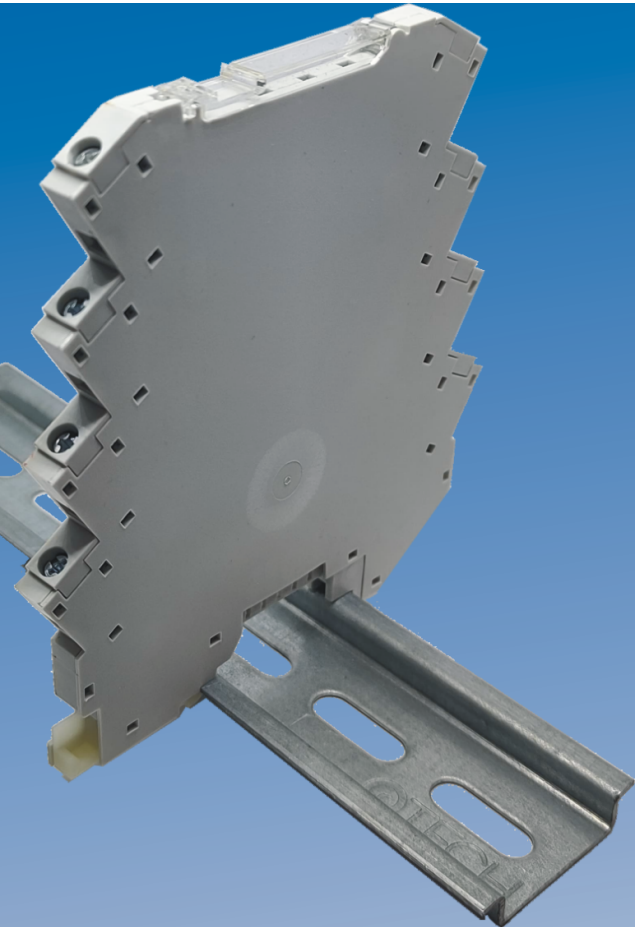


CEM6



<b>GENERAL INFORMATION</b>	
pitch	-
Height	-
Depth	-
Dimensional class	Alta
Wire section	-
Clamp opening size	-
Wire stripping	-
Operating temperature	-
<b>ELECTRICAL CHARACTERISTICS</b>	
Current	-
Voltage	-
impulse voltage	-
<b>MECHANICAL CHARACTERISTICS</b>	
Screw	-
Recommended torque	-
<b>MATERIALS</b>	
Housing	PA - UL 94 V0
Screw	-
Clamp	-
Terminal	-
<b>COLOURS</b>	
Standard	On request

