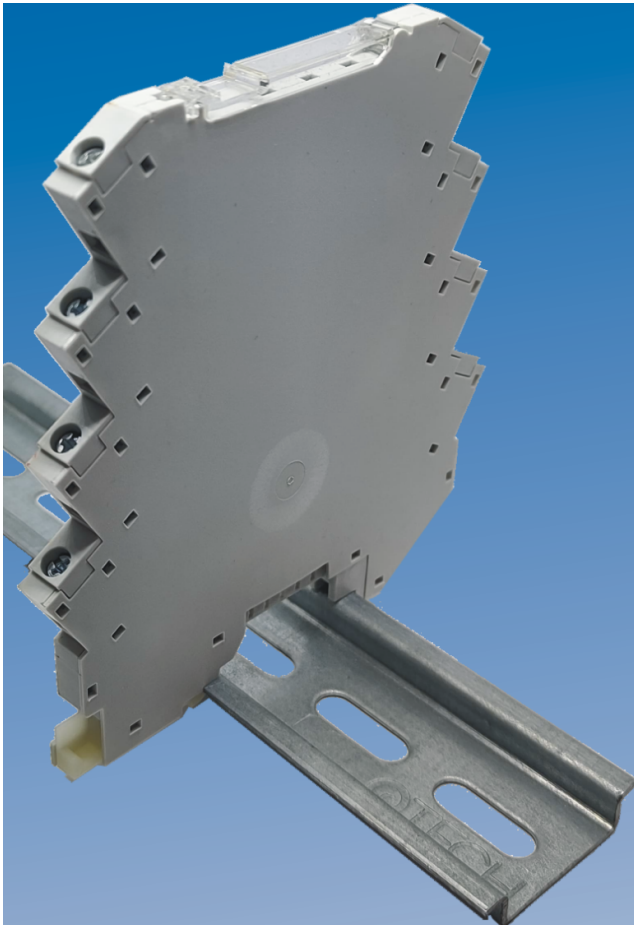


CEM6



GENERAL INFORMATION

- pitch -
- Height -
- Depth -
- Dimensional class Alta
- Wire section -
- Clamp opening size -
- Wire stripping -
- Operating temperature -

ELECTRICAL CHARACTERISTICS

- Current -
- Voltage -
- Test Voltage -

MECHANICAL CHARACTERISTICS

- Screw -
- Recommended torque -

APPROVALS DATA



Current	-	-	-
Voltage	-	-	-
Wire section	-	-	-
Torque	-	-	-
FILE	-	-	-
MATERIALS			
Housing			PA - UL 94 V0
Screw			-
Clamp			-
Terminal			-

COLOURS

Standard



On request

