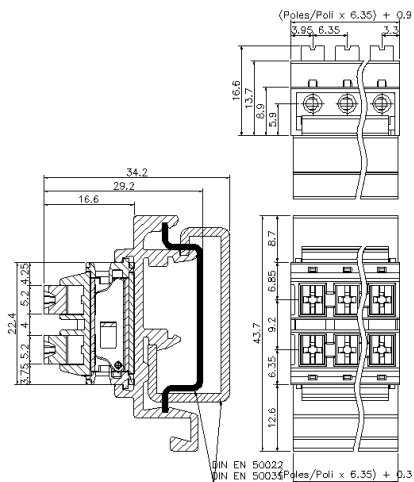
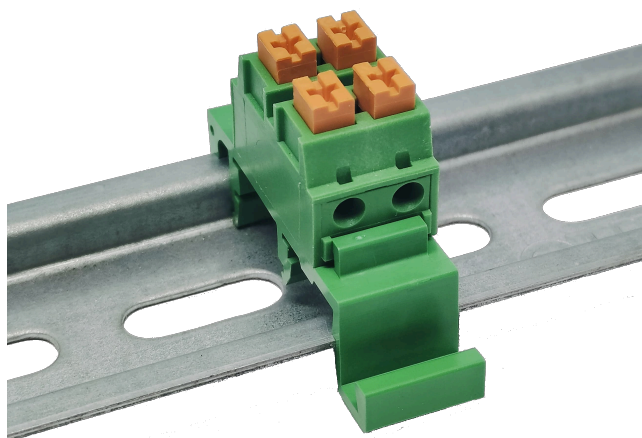


LP2__-6,35



GENERAL INFORMATION

pitch	6,35 mm
Height	-
Depth	-
Dimensional class	Media
Wire section	2.5 mm ² / 14 AWG
Clamp opening size	-
Wire stripping	max 13 mm
Operating temperature	-40 ÷ +100 °C

ELECTRICAL CHARACTERISTICS

Current	24 A
Voltage	450 V
Test Voltage	2.5 kVrms/60s

MECHANICAL CHARACTERISTICS

Screw	-
Recommended torque	-

APPROVALS DATA



Current	-	-	-
Voltage	-	-	-
Wire section	-	-	-
Torque	-	-	-
FILE	-	-	-
MATERIALS			
Housing			PA - UL 94 V0
Screw			-
Clamp			-
Terminal			Tin-plated copper alloy

COLOURS

Standard



On request



POLES

- 02
- 03

NAME

- LP202-6,35
- LP203-6,35

3D FILE

- File not available for this product
- File not available for this product