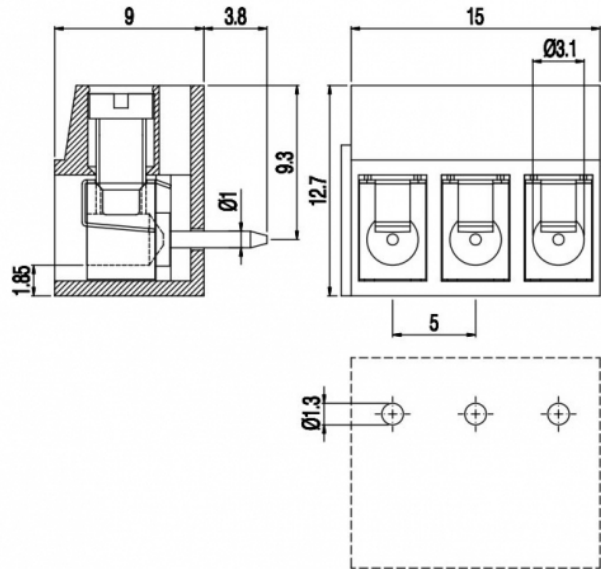


MHE16_-5-H



GENERAL INFORMATION

pitch	5 mm
Height	12.7 mm
Depth	9 mm
Dimensional class	Media
Wire section	2.5 mm ² / 14 AWG
Clamp opening size	3.1 x 3.1 mm
Wire stripping	max 6 mm
Operating temperature	-40 ÷ +130 °C

ELECTRICAL CHARACTERISTICS

Current	16 A
Voltage	250 V
Test Voltage	2 kVrms/60s

MECHANICAL CHARACTERISTICS

Screw	M3
Recommended torque	0.5÷0.55 Nm / 4.5÷4.9 in.lbs

APPROVALS DATA



Current	-	-	UL 1059
Voltage	-	-	20 A factory / 15 A field
Wire section	-	-	300 V
Torque	-	-	14 ÷ 30 AWG
FILE	-	-	4.5 Lb-in
			E178356

MATERIALS

Housing	PA - UL 94 V0
Screw	Galvanized steel
Clamp	Tin-plated copper alloy

Copper alloy

Terminal
COLOURS



On request



POLES

- 2
- 3

NAME

- MHE162-5-H
- MHE163-5-H

3D FILE

- File available
- File available