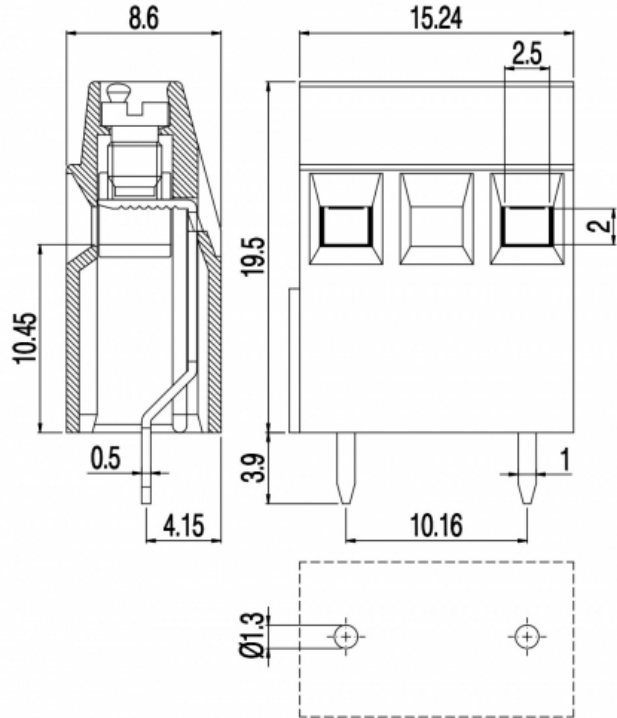
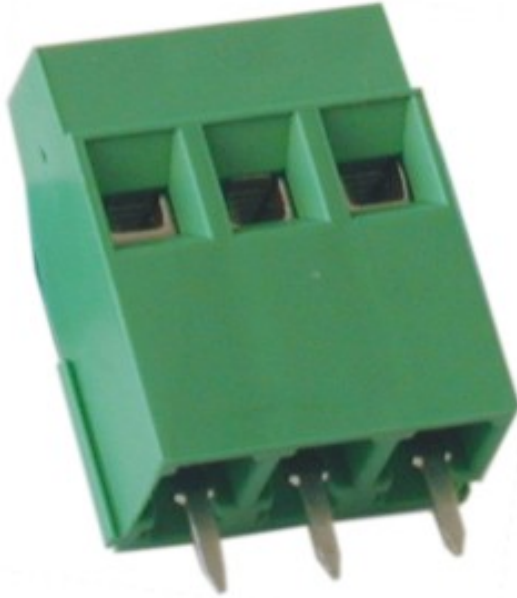


MMT15_-10,16-V



GENERAL INFORMATION

pitch	10,16 mm
Height	19.5 mm
Depth	8.6 mm
Dimensional class	Bassa
Wire section	1.5 mm ² / 16 AWG
Clamp opening size	2.5 x 2 mm
Wire stripping	max 6 mm
Operating temperature	-40 ÷ +130 °C

ELECTRICAL CHARACTERISTICS

Current	13.5 A
Voltage	750 V
Test Voltage	3 kVrms/60s

MECHANICAL CHARACTERISTICS

Screw	M3
Recommended torque	0.5÷0.55 Nm / 4.5÷4.9 in.lbs

APPROVALS DATA



Current	-	-	UL 1059
Voltage	-	-	13.5 A factory / 10 A field
Wire section	-	-	600 V
Torque	-	-	16 ÷ 30 AWG
FILE	-	-	4.5 Lb-in
			E178356

MATERIALS

Housing

Screw

Clamp

Terminal

SCIP Number

PA - UL 94 V0
Galvanized steel
Nickel-plated copper alloy
Tin-plated copper alloy
e10e91b8-6da2-4ad0-8f2d-fe103248bf2

COLOURS

Standard



On request



POLES

1

2

NAME

MMT151-10,16-V

MMT152-10,16-V

3D FILE

File not available for this product

File not available for this product