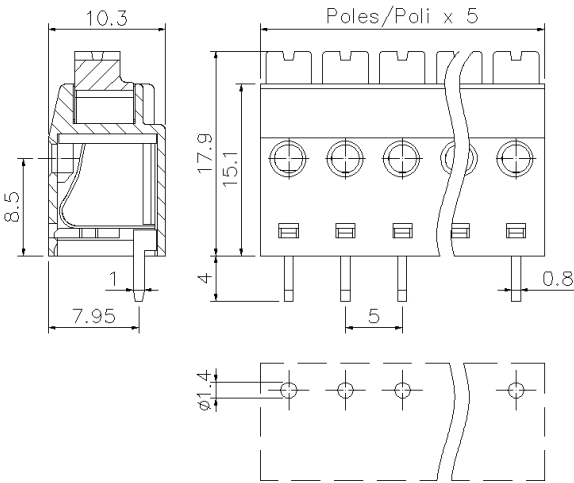
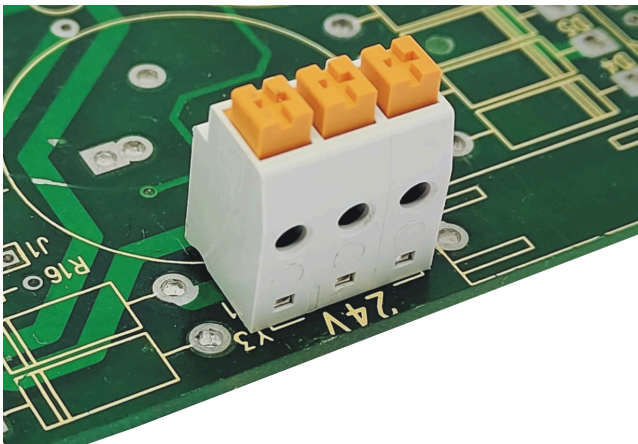


MP2__-5-V



GENERAL INFORMATION

pitch	5 mm
Height	-
Depth	-
Dimensional class	Media
Wire section	2.5 mm² / 14 AWG
Clamp opening size	-
Wire stripping	max 9,5 mm
Operating temperature	-40 ÷ +130 °C

ELECTRICAL CHARACTERISTICS

Current	16 A
Voltage	450 V
impulse voltage	2.5 kV

MECHANICAL CHARACTERISTICS

Screw	-
Recommended torque	-

APPROVALS DATA



Current	-	-	-
Voltage	-	-	-
Wire section	-	-	-
Torque	-	-	-
FILE	-	-	-

MATERIALS

Housing	PA - UL 94 V0
Screw	-
Clamp	-
Terminal	Tin-plated copper alloy

COLOURS

Standard

On request

<div>GN</div>			<div>GY</div>	<div>BK</div>	<div>BL</div>	<div>RD</div>	<div>YL</div>	<div>OG</div>
POLES			NAME			3D FILE		
02			MP02__-5-V			File not available for this product		
03			MP03__-5-V			File not available for this product		
04			MP04__-5-V			File not available for this product		
05			MP05__-5-V			File not available for this product		
06			MP06__-5-V			File not available for this product		