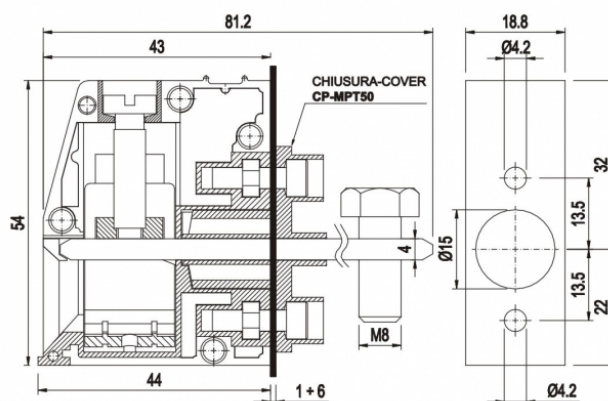
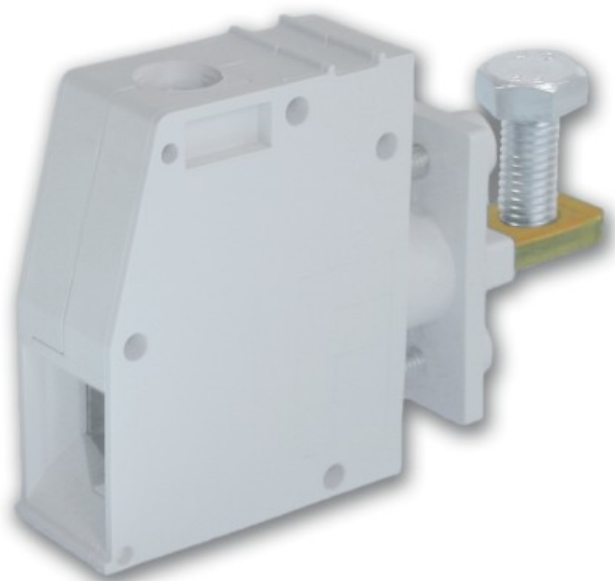


MPT5018



GENERAL INFORMATION

pitch	18,8 mm
Height	54 mm
Depth	43 mm
Dimensional class	n/a
Wire section	50 mm ² / 1/0 AWG
Clamp opening size	-
Wire stripping	max 20 mm
Operating temperature	-40 ÷ +130 °C

ELECTRICAL CHARACTERISTICS

Current	150 A
Voltage	1000 V
impulse voltage	3.5 kV

MECHANICAL CHARACTERISTICS

Screw	M6
Recommended torque	6÷6.6 Nm / 54÷59.4 in.lbs

APPROVALS DATA



	CSV	VDE	UL 1059
Current	-	-	-
Voltage	-	-	600 V
Wire section	-	-	1/0 AWG
Torque	-	-	54 Lb-in
FILE	-	-	E178356

MATERIALS

Housing	PA - UL 94 V0
Screw	Galvanized steel
Clamp	-
Terminal	Copper alloy

COLOURS

Standard



On request



POLES

01

NAME

MPT5018

3D FILE

File available