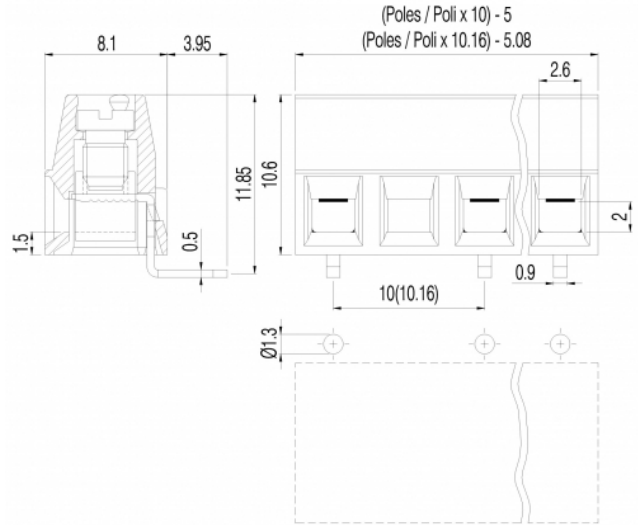


MV15_-10,16-H-L



GENERAL INFORMATION

pitch	10,16 mm
Height	10.6 mm
Depth	8.1 mm
Dimensional class	Bassa
Wire section	1.5 mm ² / 16 AWG
Clamp opening size	2.6 x 2 mm
Wire stripping	max 6 mm
Operating temperature	-40 ÷ +130 °C

ELECTRICAL CHARACTERISTICS

Current	13.5 A
Voltage	750 V
Test Voltage	3 kVrms/60s

MECHANICAL CHARACTERISTICS

Screw	M3
Recommended torque	0.5÷0.55 Nm / 4.5÷4.9 in.lbs

APPROVALS DATA



EN 60998-1

Current	13.5 A	-
Voltage	750 V	-
Wire section	1.5 mm ²	-
Torque	0.5 Nm	-
FILE	EQ202	-

UL 1059

13.5 A factory / 10 A field	-
600 V	-
16 ÷ 30 AWG	-
4.5 Lb-in	-
E178356	-

MATERIALS

Housing	PA - UL 94 V0
Screw	Galvanized steel
Clamp	Nickel-plated copper alloy

Terminal
SCIP Number
COLOURS

Tin-plated copper alloy
8e28a064-07ab-45c1-afc0-7873209ceda4

Standard

On request



POLES

- 2
- 3
- 4
- 5
- 6

NAME

- MV152-10,16-H-L
- MV153-10,16-H-L
- MV154-10,16-H-L
- MV155-10,16-H-L
- MV156-10,16-H-L

3D FILE

- File not available for this product
- File not available for this product
- File not available for this product
- File not available for this product
- File not available for this product