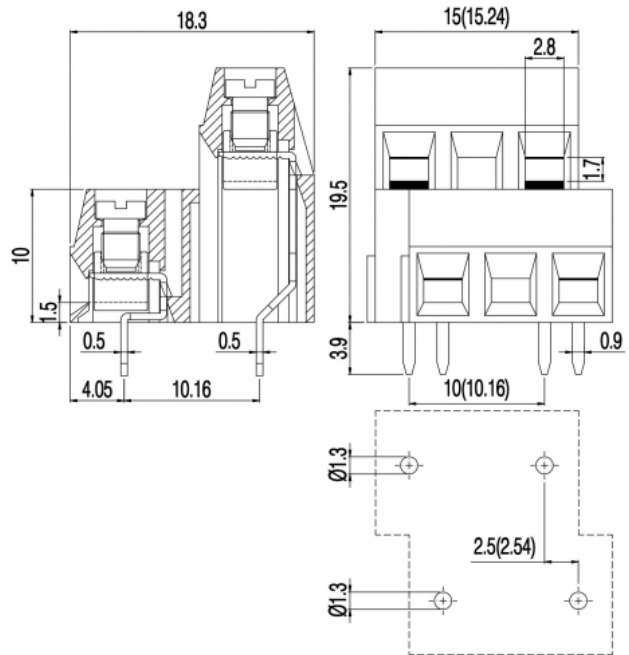
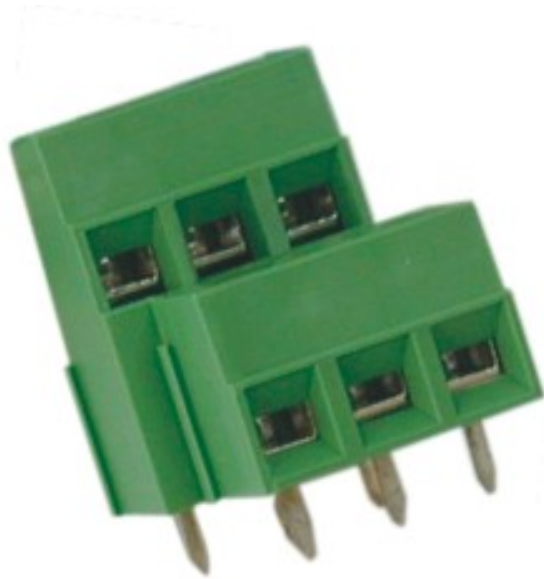


# MVD15\_-10,16-V



## GENERAL INFORMATION

pitch	10,16 mm
Height	16.5 mm
Depth	18.3 mm
Dimensional class	Bassa
Wire section	1.5 mm <sup>2</sup> / 16 AWG
Clamp opening size	2.5 x 1.7 mm
Wire stripping	max 6 mm
Operating temperature	-40 ÷ +130 °C

## ELECTRICAL CHARACTERISTICS

Current	13.5 A
Voltage	750 V
Test Voltage	3 kVrms/60s

## MECHANICAL CHARACTERISTICS

Screw	M3
Recommended torque	0.5÷0.55 Nm / 4.5÷4.9 in.lbs

## APPROVALS DATA



Current	-	-	<b>UL 1059</b>
Voltage	-	-	13.5 A factory / 10 A field
Wire section	-	-	600 V
Torque	-	-	16 ÷ 30 AWG
FILE	-	-	4.5 Lb-in
			E178356

## MATERIALS

Housing	PA - UL 94 V0
Screw	Galvanized steel

Clamp  
Terminal  
SCIP Number  
**COLOURS**

Nickel-plated copper alloy  
Tin-plated copper alloy  
d0ac85a5-a74a-41e4-ac05-3977aee87aff

Standard



On request



**POLES**

- 1
- 2

**NAME**

- MVD151-10,16-V
- MVD152-10,16-V

**3D FILE**

- File not available for this product
- File not available for this product