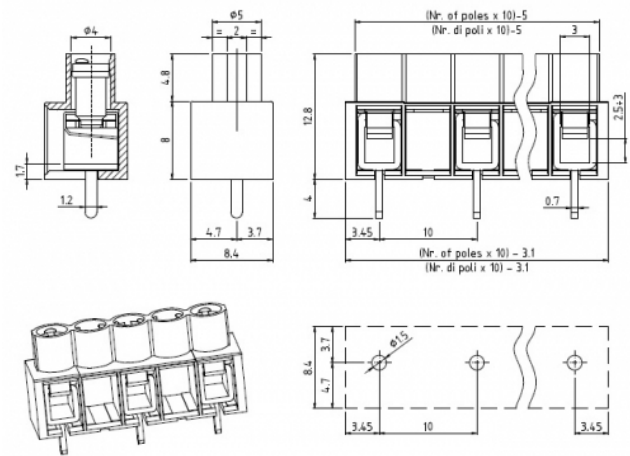
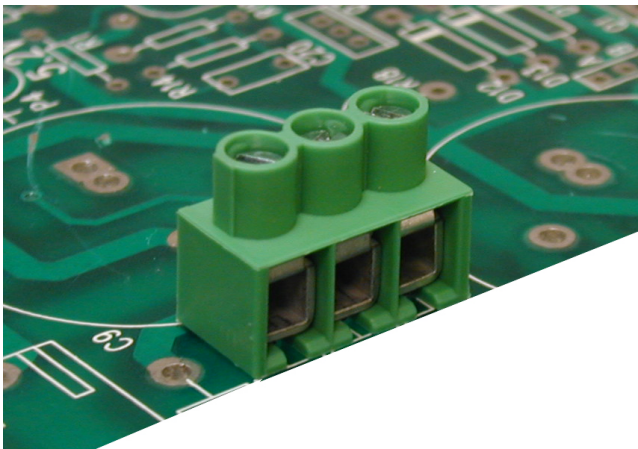


MVE26_-10-V



GENERAL INFORMATION

pitch	10 mm
Height	12.8 mm
Depth	8.4 mm
Dimensional class	Media
Wire section	2.5 mm² / 12 AWG
Clamp opening size	2.5 x 3 mm
Wire stripping	max 7.5 mm
Operating temperature	-40 ÷ +130 °C

ELECTRICAL CHARACTERISTICS

Current	24 A
Voltage	1000 V
impulse voltage	3 kV

MECHANICAL CHARACTERISTICS

Screw	M3
Recommended torque	0.5÷0.55 Nm / 4.5÷4.9 in.lbs

APPROVALS DATA



Current	-
Voltage	-
Wire section	-
Torque	-
FILE	-

EN 60998-1
24 A
1000 V
2.5 mm²
0.5 Nm
40019705

UL 1059
26 A factory / 20 A field
300V (B,C) V
12 AWG
4.5 Lb-in
E178356

MATERIALS

Housing	PA - UL 94 V0
Screw	Galvanized steel
Clamp	Tin-plated copper alloy
Terminal	Tin-plated copper alloy

COLOURS

Standard

On request

<div><div>GN</div><div>GYBKBLRDYLOG</div></div>		
POLES	NAME	3D FILE
2	MVE262-10-V	File not available for this product
3	MVE263-10-V	File not available for this product
4	MVE264-10-V	File not available for this product
5	MVE265-10-V	File not available for this product
6	MVE266-10-V	File not available for this product
7	MVE267-10-V	File not available for this product
8	MVE268-10-V	File not available for this product
9	MVE269-10-V	File not available for this product
10	MVE2610-10-V	File not available for this product
11	MVE2611-10-V	File not available for this product
12	MVE2612-10-V	File not available for this product