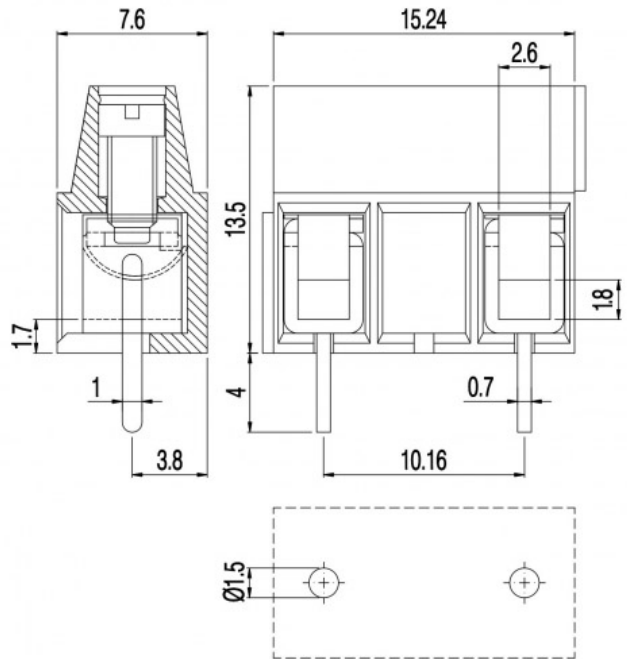


MVES15_-10,16-V



GENERAL INFORMATION

| | |
|-----------------------|------------------------------|
| pitch | 10,16 mm |
| Height | 13.5 mm |
| Depth | 7.6 mm |
| Dimensional class | Bassa |
| Wire section | 1.5 mm ² / 16 AWG |
| Clamp opening size | 2.6 x 2.6 mm |
| Wire stripping | max 7 mm |
| Operating temperature | -40 ÷ +130 °C |

ELECTRICAL CHARACTERISTICS

| | |
|--------------|-------------|
| Current | 17.5 A |
| Voltage | 750 V |
| Test Voltage | 7 kVrms/60s |

MECHANICAL CHARACTERISTICS

| | |
|--------------------|----------------------------|
| Screw | M2.5 |
| Recommended torque | 0.4÷0.44 Nm / 3.6÷4 in.lbs |

APPROVALS DATA



| | | | |
|--------------|---------------------|---|-----------------------------|
| | EN 60998-1 | | UL 1059 |
| Current | 17.5 A | - | 17.5 A factory / 10 A field |
| Voltage | 750 V | - | 600 V |
| Wire section | 1.5 mm ² | - | 16 ÷ 30 AWG |
| Torque | 0.4 Nm | - | 3.6 Lb-in |
| FILE | EP151 | - | E178356 |

MATERIALS

| | |
|---------|---------------|
| Housing | PA - UL 94 V0 |
|---------|---------------|

Screw
Clamp
Terminal

Galvanized steel
Tin-plated copper alloy
Tin-plated copper alloy

COLOURS

Standard

On request



POLES

| | NAME | 3D FILE |
|---|-----------------|-------------------------------------|
| 1 | MVES151-10,16-V | File not available for this product |
| 2 | MVES152-10,16-V | File not available for this product |