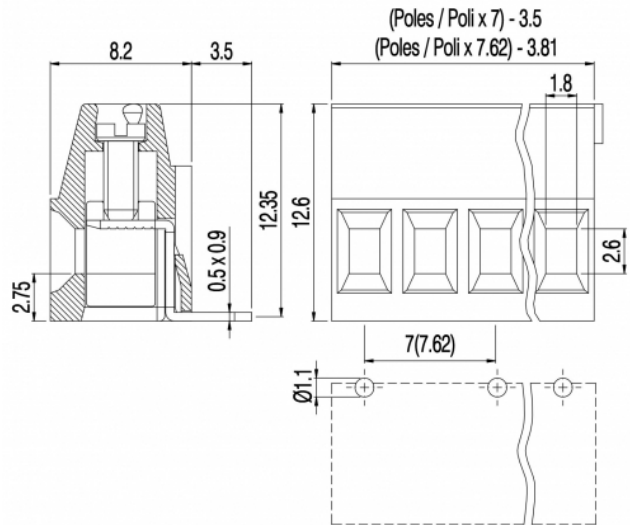


# MVS13\_-7-H



**GENERAL INFORMATION**

pitch	7 mm
Height	12.6 mm
Depth	8.2 mm
Dimensional class	Bassa
Wire section	1.5 mm <sup>2</sup> / 16 AWG
Clamp opening size	1.8 x 2.6 mm
Wire stripping	max 6 mm
Operating temperature	-40 ÷ +130 °C

**ELECTRICAL CHARACTERISTICS**

Current	13,5 A
Voltage	450 V
Test Voltage	2.5 kVrms/60s

**MECHANICAL CHARACTERISTICS**

Screw	M2
Recommended torque	0.2÷0.22 Nm / 1.8÷2 in.lbs

**APPROVALS DATA**



	<b>EN 60998-1</b>		<b>UL 1059</b>
Current	17.5 A	-	12 A factory / 10 A field
Voltage	450 V	-	300 V
Wire section	1.5 mm <sup>2</sup>	-	16 ÷ 30 AWG
Torque	0.2 Nm	-	1.8 Lb-in
FILE	CA02.04718	-	E178356

**MATERIALS**

Housing	PA - UL 94 V0
---------	---------------

Screw  
Clamp  
Terminal  
SCIP Number

Galvanized steel  
Tin-plated copper alloy  
Tin-plated copper alloy  
44bdd228-db28-48a8-9c38-13f7c55006ec

**COLOURS**

Standard



On request



**POLES**

- 1
- 2
- 3
- 4
- 5
- 6

**NAME**

- MVS131-7-H
- MVS132-7-H
- MVS133-7-H
- MVS134-7-H
- MVS135-7-H
- MVS136-7-H

**3D FILE**

- File not available for this product
- File not available for this product
- File not available for this product
- File not available for this product
- File not available for this product
- File not available for this product