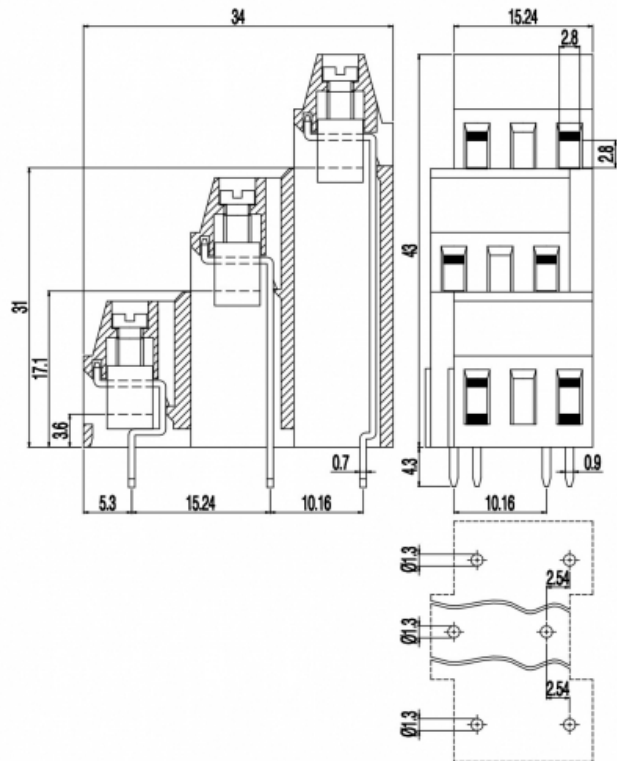


# MVT25\_-10,16-V



## GENERAL INFORMATION

pitch	10,16 mm
Height	43 mm
Depth	34 mm
Dimensional class	Media
Wire section	2.5 mm <sup>2</sup> / 14 AWG
Clamp opening size	2.8 x 2.8 mm
Wire stripping	max 8 mm
Operating temperature	-40 ÷ +130 °C

## ELECTRICAL CHARACTERISTICS

Current	16 A
Voltage	750 V
Test Voltage	3 kVrms/60s

## MECHANICAL CHARACTERISTICS

Screw	M3
Recommended torque	0.5÷0.55 Nm / 4.5÷4.9 in.lbs

## APPROVALS DATA



EN 60998-1

Current	16 A
Voltage	750 V
Wire section	2.5 mm <sup>2</sup>
Torque	0.5 Nm



EN 60998-1

Current	16 A
Voltage	750 V
Wire section	2.5 mm <sup>2</sup>
Torque	0.5 Nm



UL 1059

Current	16 A factory / 15 A field
Voltage	300 V
Wire section	14 ÷ 30 AWG
Torque	4.5 Lb-in

<b>FILE</b>	EP149	40023956	E178356
<b>MATERIALS</b>			
Housing			PA - UL 94 V0
Screw			Galvanized steel
Clamp			Nickel-plated copper alloy
Terminal			Tin-plated copper alloy
SCIP Number			0890509a-4eed-4858-be0a-55b27111b244

**COLOURS**

Standard



On request



**POLES**

- 1
- 2

**NAME**

- MVT251-10,16-V
- MVT252-10,16-V

**3D FILE**

- File not available for this product
- File not available for this product