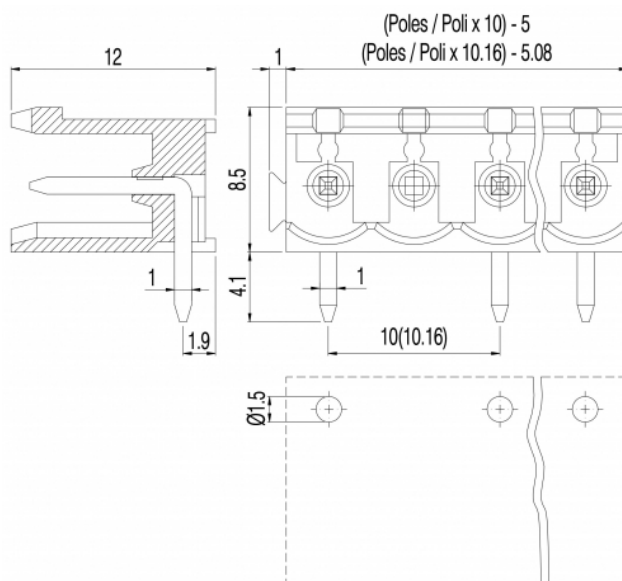
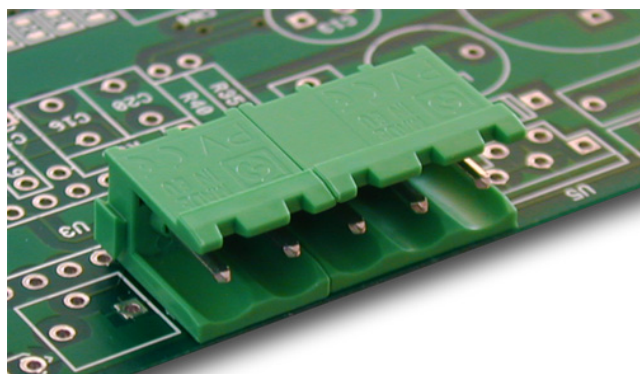


# PV\_\_-10,16-H-M



### GENERAL INFORMATION

pitch	10,16 mm
Height	8.5 mm
Depth	12 mm
Dimensional class	Media
Wire section	-
Clamp opening size	-
Wire stripping	-
Operating temperature	-40 ÷ +130 °C

### ELECTRICAL CHARACTERISTICS

Current	15 A
Voltage	500 V
Test Voltage	6 kVrms/60s

### MECHANICAL CHARACTERISTICS

Screw	-
Recommended torque	-

### APPROVALS DATA



<b>EN 60998-1</b>	
Current	15 A
Voltage	500 V
Wire section	-
Torque	-
FILE	CA02.04178



<b>EN 61984</b>	
Current	15 A
Voltage	500 V
Wire section	-
Torque	-
FILE	40005779



<b>UL 1059</b>	
Current	12 A factory / 12 A field
Voltage	600 V
Wire section	-
Torque	-
FILE	E178356

### MATERIALS

Housing	PA - UL 94 V0
Screw	-
Clamp	-
Terminal	Tin-plated copper alloy

**COLOURS**

Standard

On request



**POLES**

01  
02

**NAME**

PV01-10,16-H-M  
PV02-10,16-H-M

**3D FILE**

File not available for this product  
File not available for this product