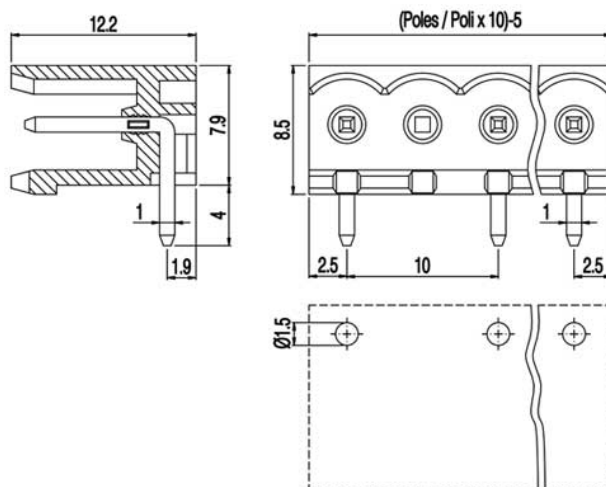
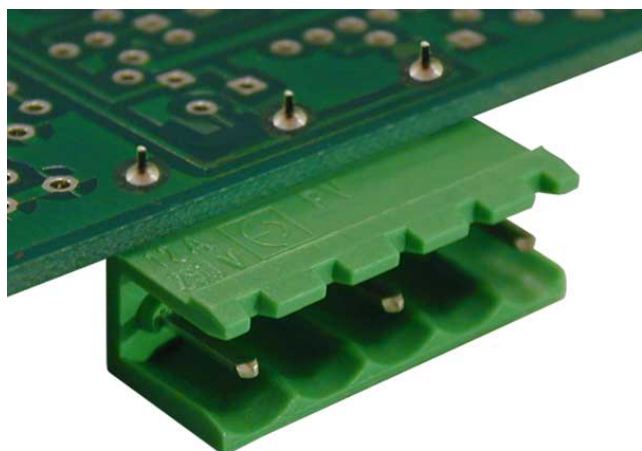


# PV\_\_-10-HR



### GENERAL INFORMATION

pitch	10 mm
Height	8.5 mm
Depth	12.2 mm
Dimensional class	Media
Wire section	-
Clamp opening size	-
Wire stripping	-
Operating temperature	-40 ÷ +130 °C

### ELECTRICAL CHARACTERISTICS

Current	15 A
Voltage	500 V
Test Voltage	6 kVrms/60s

### MECHANICAL CHARACTERISTICS

Screw	-
Recommended torque	-

### APPROVALS DATA



<b>EN 60998-1</b>	
Current	15 A
Voltage	500 V
Wire section	-
Torque	-
FILE	CA02.04178



<b>EN 61984</b>	
Current	15 A
Voltage	500 V
Wire section	-
Torque	-
FILE	40005779



<b>UL 1059</b>	
Current	12 A factory / 12 A field
Voltage	600 V
Wire section	-
Torque	-
FILE	E178356

### MATERIALS

Housing	PA - UL 94 V0
Screw	-
Clamp	-
Terminal	Tin-plated copper alloy

### COLOURS

Standard

On request



**POLES**

02  
03  
04  
05  
06  
07  
08  
09  
10  
11  
12

**NAME**

PV02-10-HR  
PV03-10-HR  
PV04-10-HR  
PV05-10-HR  
PV06-10-HR  
PV07-10-HR  
PV08-10-HR  
PV09-10-HR  
PV10-10-HR  
PV11-10-HR  
PV12-10-HR

**3D FILE**

File not available for this product  
File not available for this product  
File not available for this product  
File not available for this product  
File not available for this product  
File not available for this product  
File not available for this product  
File not available for this product  
File not available for this product  
File not available for this product  
File not available for this product