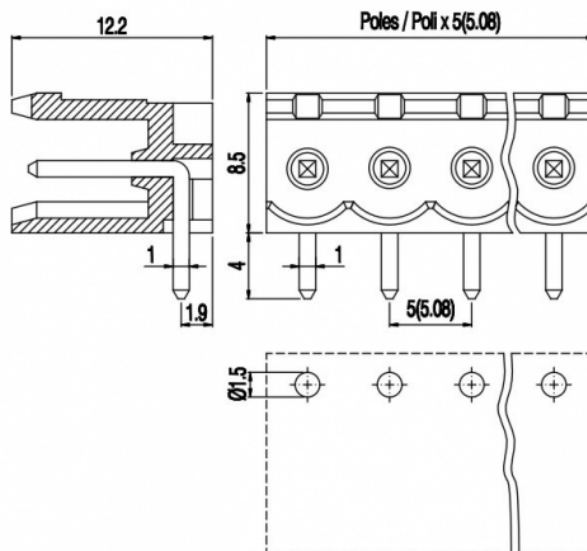
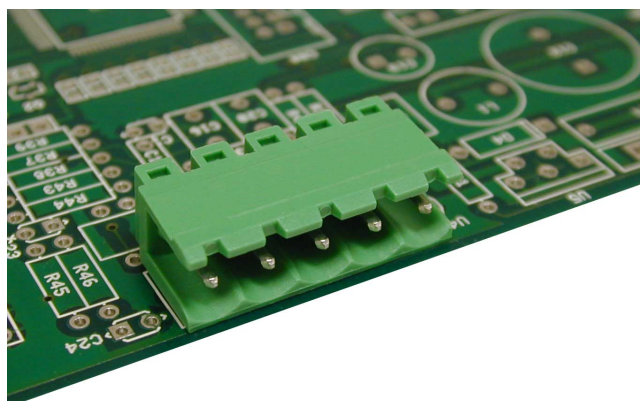


PV__-5-H



GENERAL INFORMATION

pitch	5 mm
Height	8.5 mm
Depth	12.2 mm
Dimensional class	Media
Wire section	-
Clamp opening size	-
Wire stripping	-
Operating temperature	-40 ÷ +130 °C

ELECTRICAL CHARACTERISTICS

Current	16 A
Voltage	250 V
Test Voltage	4 kVrms/60s

MECHANICAL CHARACTERISTICS

Screw	-
Recommended torque	-

APPROVALS DATA



	EN 61984	EN 61984	UL 1059
Current	16 A	12 A	16 A factory / 16 A field
Voltage	250 V	250 V	300 V
Wire section	-	-	-
Torque	-	-	-
FILE	CA02.04178	40005779	E178356

MATERIALS

Housing	PA - UL 94 V0
Screw	-
Clamp	-
Terminal	Tin-plated copper alloy

COLOURS

Standard



On request



POLES

- 02
- 03
- 04
- 05
- 06
- 07
- 08
- 09
- 10
- 11
- 12
- 13
- 14
- 15
- 16
- 17
- 18
- 19
- 20
- 21
- 22
- 23
- 24

NAME

- PV02-5-H
- PV03-5-H
- PV04-5-H
- PV05-5-H
- PV06-5-H
- PV07-5-H
- PV08-5-H
- PV09-5-H
- PV10-5-H
- PV11-5-H
- PV12-5-H
- PV13-5-H
- PV14-5-H
- PV15-5-H
- PV16-5-H
- PV17-5-H
- PV18-5-H
- PV19-5-H
- PV20-5-H
- PV21-5-H
- PV22-5-H
- PV23-5-H
- PV24-5-H

3D FILE

- File available
- File available
- File available
- File available
- File available
- File available
- File available
- File available
- File available
- File available
- File available
- File available
- File available
- File available
- File available
- File available
- File available
- File available
- File available
- File available
- File available
- File available