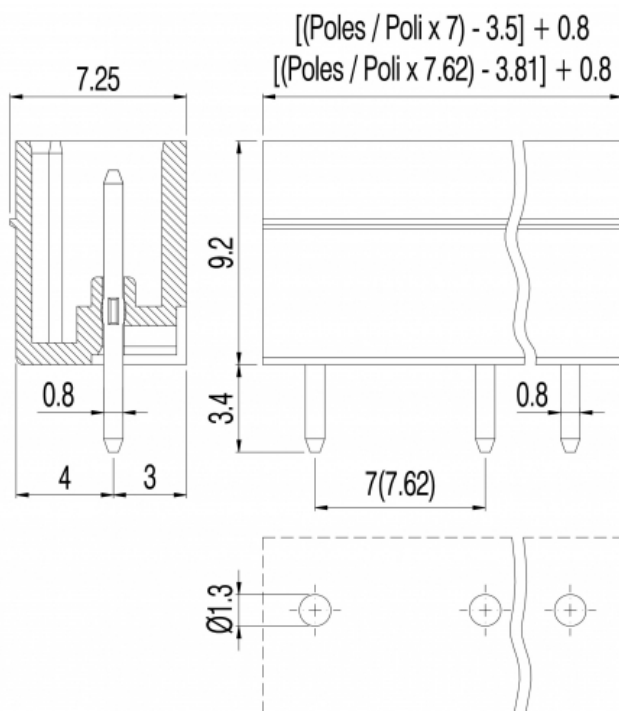
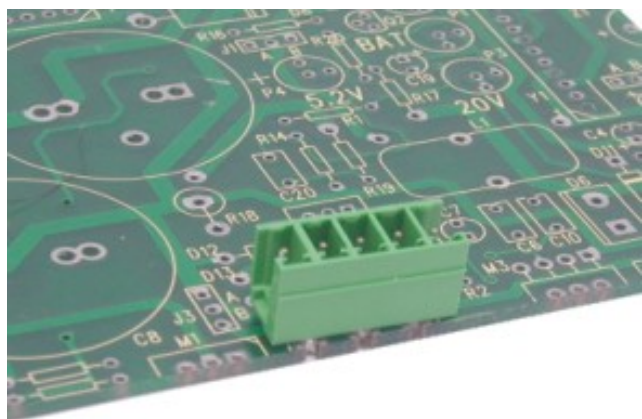


# PV\_\_-7-V-P



### GENERAL INFORMATION

pitch	7 mm
Height	9.2 mm
Depth	7.25 mm
Dimensional class	Bassa
Wire section	-
Clamp opening size	-
Wire stripping	-
Operating temperature	-40 ÷ +130 °C

### ELECTRICAL CHARACTERISTICS

Current	11 A
Voltage	500 V
Test Voltage	6 kVrms/60s

### MECHANICAL CHARACTERISTICS

Screw	-
Recommended torque	-

### APPROVALS DATA



	EN 61984	UL 1059
Current	11 A	11 A factory / 11 A field
Voltage	400 V	300 V
Wire section	-	-
Torque	-	-
FILE	40048261	E178356

### MATERIALS

Housing  
Screw  
Clamp  
Terminal

PA - UL 94 V0  
-  
-  
Tin-plated copper alloy

**COLOURS**

Standard



On request



**POLES**

- 02
- 03
- 04
- 05
- 06
- 07
- 08
- 09
- 10
- 11
- 12

**NAME**

- PV02-7-V-P
- PV03-7-V-P
- PV04-7-V-P
- PV05-7-V-P
- PV06-7-V-P
- PV07-7-V-P
- PV08-7-V-P
- PV09-7-V-P
- PV10-7-V-P
- PV11-7-V-P
- PV12-7-V-P

**3D FILE**

- File not available for this product
- File not available for this product
- File not available for this product
- File not available for this product
- File not available for this product
- File not available for this product
- File not available for this product
- File not available for this product
- File not available for this product
- File not available for this product
- File not available for this product