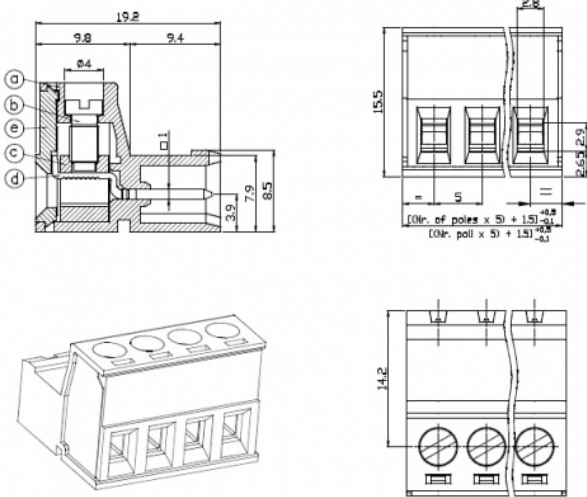


SF__-5-P



GENERAL INFORMATION

pitch	5 mm
Height	15.5 mm
Depth	19.2 mm
Dimensional class	Media
Wire section	2.5 mm² / 12 AWG
Clamp opening size	2.8 x 2.9 mm
Wire stripping	max 8 mm
Operating temperature	-40 ÷ +130 °C

ELECTRICAL CHARACTERISTICS

Current	16 A
Voltage	250 V
Test Voltage	4 kVrms/60s

MECHANICAL CHARACTERISTICS

Screw	M3
Recommended torque	0.5÷0.55 Nm / 4.5÷4.9 in.lbs

APPROVALS DATA



Current	-	-	UL 1059
Voltage	-	-	22 A factory / 20 A field
Wire section	-	-	300 V
Torque	-	-	12 ÷ 30 AWG
FILE	-	-	4.5 Lb-in
			E178356

MATERIALS

Housing	PA - UL 94 V0
Screw	Galvanized steel
Clamp	Nickel-plated copper alloy
Terminal	Nickel-plated copper alloy
SCIP Number	e27c55ac-423d-4d46-808e-20cdb05c39b8

COLOURS		
	Standard	On request
	<div>GN</div>	<div>GY</div> <div>BK</div> <div>BL</div> <div>RD</div> <div>YL</div> <div>OG</div>
POLES	NAME	3D FILE
02	SF02-5-P	File not available for this product
03	SF03-5-P	File not available for this product
04	SF04-5-P	File not available for this product
05	SF05-5-P	File not available for this product
06	SF06-5-P	File not available for this product
07	SF07-5-P	File not available for this product
08	SF08-5-P	File not available for this product
09	SF09-5-P	File not available for this product
10	SF10-5-P	File not available for this product
11	SF11-5-P	File not available for this product
12	SF12-5-P	File not available for this product
13	SF13-5-P	File not available for this product
14	SF14-5-P	File not available for this product
15	SF15-5-P	File not available for this product
16	SF16-5-P	File not available for this product
17	SF17-5-P	File not available for this product
18	SF18-5-P	File not available for this product
19	SF19-5-P	File not available for this product
20	SF20-5-P	File not available for this product
21	SF21-5-P	File not available for this product
22	SF22-5-P	File not available for this product
23	SF23-5-P	File not available for this product
24	SF24-5-P	File not available for this product