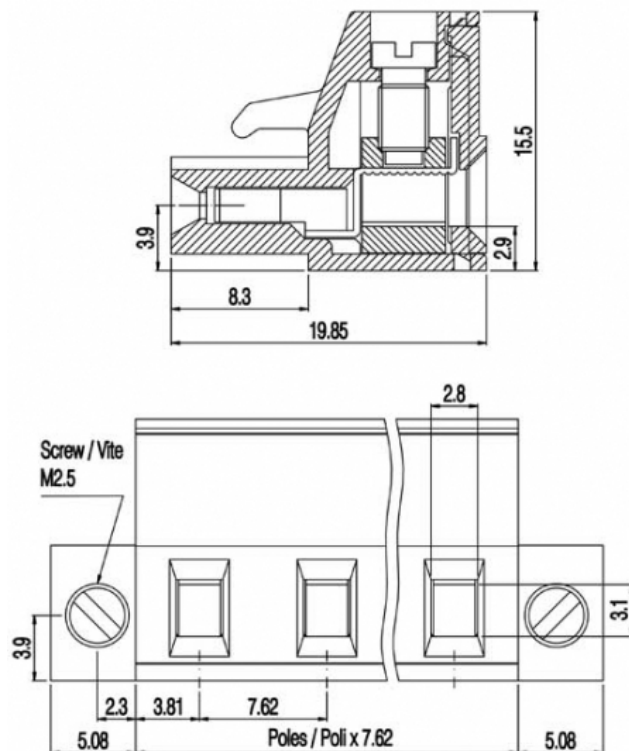
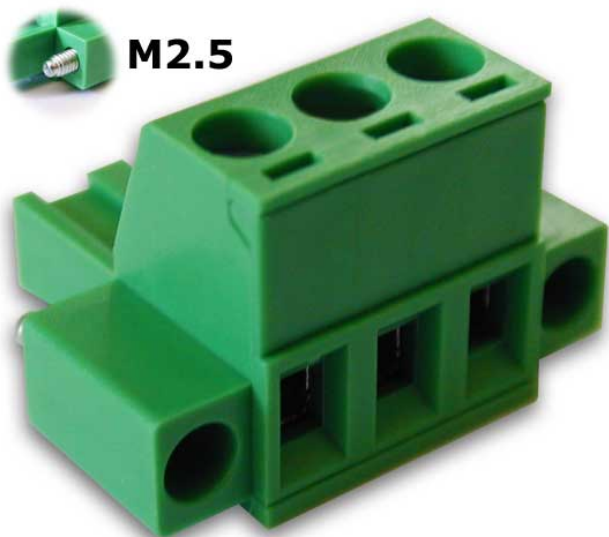


SH__-7,62-K2



GENERAL INFORMATION

pitch	7,62 mm
Height	15.5 mm
Depth	19.85 mm
Dimensional class	Media
Wire section	2.5 mm ² / 14 AWG
Clamp opening size	2.8 x 3.1 mm
Wire stripping	max 8 mm
Operating temperature	-40 ÷ +130 °C

ELECTRICAL CHARACTERISTICS

Current	15 A
Voltage	500 V
Test Voltage	6 kVrms/60s

MECHANICAL CHARACTERISTICS

Screw	M3
Recommended torque	0.5÷0.55 Nm / 4.5÷4.9 in.lbs

APPROVALS DATA



	EN 61984	EN 61984	UL 1059
Current	15 A	15 A	12 A factory / 12 A field
Voltage	500 V	500 V	300 V
Wire section	2.5 mm ²	2.5 mm ²	14 ÷ 30 AWG
Torque	0.5 Nm	0.5 Nm	4.5 Lb-in
FILE	CA02.04178	40005779	E178356

MATERIALS

Housing

Screw

Clamp

Terminal

SCIP Number

PA - UL 94 V0
Galvanized steel
Nickel-plated copper alloy
Copper alloy
2b16c5e0-b81c-4d1f-839d-5472703af01d

COLOURS

Standard



On request



POLES

02

03

04

05

NAME

SH02-7,62-K2

SH03-7,62-K2

SH04-7,62-K2

SH05-7,62-K2

3D FILE

File available

File not available for this product

File not available for this product

File not available for this product