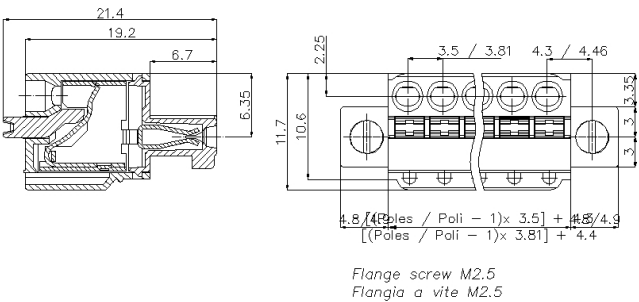
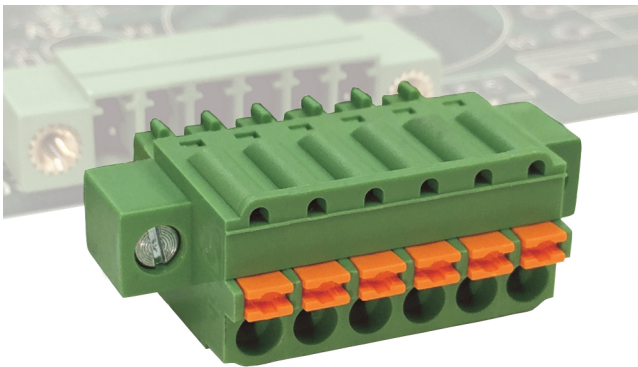


SHM\_\_-3,81-PK



GENERAL INFORMATION

pitch	3,81 mm
Height	11.7 mm
Depth	21.4 mm
Dimensional class	Bassa
Wire section	1.5 mm² / 16 AWG
Clamp opening size	-
Wire stripping	max 10 mm
Operating temperature	-40 ÷ +105 °C

ELECTRICAL CHARACTERISTICS

Current	11 A
Voltage	160 V
impulse voltage	2.5 kV

MECHANICAL CHARACTERISTICS

Screw	-
Recommended torque	-

APPROVALS DATA



Current	-	-	UL 1059
Voltage	-	-	11 A factory / 11 A field
Wire section	-	-	300 V
Torque	-	-	14 AWG
FILE	-	-	-
			E178356

MATERIALS

Housing	PA - UL 94 V0
Screw	-
Clamp	-
Terminal	Tin-plated copper alloy

COLOURS

Standard

On request

<div><div>GN</div><div>GY</div><div>BK</div><div>BL</div><div>RD</div><div>YL</div><div>OG</div></div>		
POLES	NAME	3D FILE
02	SHM02-3,81-PK	File not available for this product
03	SHM03-3,81-PK	File not available for this product
04	SHM04-3,81-PK	File not available for this product
05	SHM05-3,81-PK	File not available for this product
06	SHM06-3,81-PK	File not available for this product
07	SHM07-3,81-PK	File not available for this product
08	SHM08-3,81-PK	File not available for this product
09	SHM09-3,81-PK	File not available for this product
10	SHM10-3,81-PK	File not available for this product
11	SHM11-3,81-PK	File not available for this product
12	SHM12-3,81-PK	File not available for this product
13	SHM13-3,81-PK	File not available for this product
14	SHM14-3,81-PK	File not available for this product
15	SHM15-3,81-PK	File not available for this product
16	SHM16-3,81-PK	File not available for this product
17	SHM17-3,81-PK	File not available for this product
18	SHM18-3,81-PK	File not available for this product
19	SHM19-3,81-PK	File not available for this product
20	SHM20-3,81-PK	File not available for this product
21	SHM21-3,81-PK	File not available for this product
22	SHM22-3,81-PK	File not available for this product